

SUMMER SEMESTER

2010

3
4-9
11-36
37-42
43-47
48-52
53-55
56-63
65-69

WESTERN IOWA TECH COMMUNITY COLLEGE

www.witcc.edu

Summer classes begin June 1
and end August 6, 2010

Online classes begin June 1
and end July 26, 2010

Interim Classes: May 20-27, 2010

First Half: June 1 - July 2, 2010
Second Half: July 6 - August 6, 2010

**New
Programs!
See
page 10**

Summer/Fall Calendar
Registration Information
WITCC Alphabetical
Program/Course Listing
WITCC Evening College
Sioux City Interim, 1st Half, 2nd Half
WITCC Courses Held Off-Campus
Hybrid Courses
WITCC Online Courses
WITCC Unique Plan
of Study Information



Course Numbers

The Iowa community colleges have a common course numbering system for all credit courses offered by Iowa community colleges. The numbering system facilitates transfer and articulation processes for Iowa community college students.

A B C

Discipline prefix of program or subject

1 2 3

000-099

developmental courses

100-899

courses intended to meet specific requirements for certificates, diplomas, and degrees in career and technical and transfer programs

900-999

generic focus courses such as special topics, OJT, internships

Key to Course Prefixes

ACC	Accounting	FIR	Fire Science
ADM	Administrative Assistant	FLF	Foreign Language–French
ADN	Associate Degree Nursing	FLG	Foreign Language–German
AGA	Agriculture – Agronomy	FLS	Foreign Language–Spanish
AGB	Agriculture – Farm Equipment	GEO	Geography
AGC	Agriculture – Comprehensive M	GRA	Graphic Communications
AGM	Agriculture Mechanics	HCR	Heating and Air Conditioning
AGP	Agriculture Precision	HIS	History
AGS	Agriculture – Animal Science	HIT	Health Information Tech.
AGT	Agriculture Technology	HSC	Health Science
AGV	Veterinary Assistant	HUM	Humanities
ANT	Anthropology	IND	Industrial Technology
ARC	Architectural	INT	Interior Design
ART	Art	JOU	Journalism
ATR	Automation Tech and Robotics	LIT	Literature
AUT	Automotive Technology	MAP	Medical Assistant
BCA	Business Computer Application	MAT	Mathematics
BIO	Biology	MFG	Manufacturing
BIR	Band Instrument Repair	MGT	Management
BMA	Building Maintenance	MKT	Marketing
BPT	Bioprocess Technology	MMS	Mass Media Studies
BUS	Business	MUA	Music–Applied
CAD	Computer Aided Drafting	MUS	General Music
CHM	Chemistry	NET	Computer Networking/Cyber Crime Investigations
CIS	Info. Systems/Video Game Design	PEA	Phys. Ed. Activities
CLS	Cultural Studies	PEC	Coaching Officiating
COM	Communication	PEH	General Phys. Ed. & Health
CON	Construction	PHI	Philosophy
CRJ	Criminal Justice	PHR	Pharmacy Tech
CRR	Collision Repair/Refinish	PHS	Physical Science
CSC	Computer Science	PHY	Physics
DEA	Dental Assistant	PNN	Practical Nursing
DRA	Drama	POL	Political Science
DRF	Drafting	PRL	Paralegal/Legal Assistant
DSL	Diesel	PSY	Psychology
ECE	Early Childhood Education	PTA	Physical Therapist Assistant
ECN	Economics	RDG	Reading
EDM	Emergency & Disaster Mgmt.	REL	Religion
EDU	Education	SDV	Student Development
EGT	Engineering Technology	SOC	Sociology
ELE	Electrical Technology	SPC	Speech
ELT	Electronics	SUR	Surgical Technology
EMS	Emergency Medical Services	WEL	Welding
ENG	English Composition	WTT	Wind Energy Technician
ENV	Environmental Science		
FIN	Finance		

Calendar

Summer Semester 2010

May 27	Faculty workday; no classes; offices open
May 28	Faculty workday; no College services available
May 31	Memorial Day holiday; College closed
June 1	Online classes begin
June 1	Classes begin
June 9	Initial filing date for Summer 2010 graduation
June 18	Deadline for filing for Summer 2010 graduation
June 22	Winterim registration begins
July 2	First half Summer Semester ends
July 5	Independence Day holiday; College closed
July 6	Second half Summer Semester begins
July 26	Online classes end
August 6	Summer Semester ends; no evening classes; Commencement

Fall Semester 2010

August 19	Faculty workday; no classes; offices open
August 20	Faculty workday; no classes; offices open
August 23	Classes begin
August 23	Online classes begin
September 6	Labor Day holiday; College closed
October 18	No classes; offices open
October 19 & 20	Employee Development; no classes; offices closed
November 25 & 26	Thanksgiving Break; College closed
December 10	Online classes end
December 21	Fall Semester ends; Commencement
December 22	Faculty workday; no classes; offices open
December 23–31	Winter Break; College closed
January 3-14, 2011	Winterim classes; student registration services available; offices open

Telephone Information

Toll Free	800-352-4649
General Information	712-274-6400
Enrollment Services Office (Room A300)	712-274-6403
Registration Center (Room A300)	712-274-6404
Financial Aid (Room A330)	712-274-6402
Student Accounts (Room A526)	712-274-8733, x1210
Bookstore (Room L136)	712-274-8733, x1218
Housing (Room A300)	712-274-6417
Denison Campus	712-263-3419
Cherokee Campus & Conference Center	712-225-0238
Le Mars Center	712-546-7338

Western Iowa Tech Community College does not discriminate on the basis of race, creed, color, gender, national origin, religion, age, disability, sexual orientation, gender identity, or other protected basis in its educational programs, activities, admission procedures, or employment practices.

Welcome to Western Iowa Tech Community College

A CHECKLIST FOR REGISTRATION AND YOUR ACADEMIC SUCCESS

- ✓ **Complete and submit Application for Admission**
 - Application available in Enrollment Services (Room A300) on the Sioux City Campus, or the main office on the Denison, Cherokee, and Le Mars campuses.
 - Apply online at www.witcc.edu.
- ✓ **Apply for Financial Aid if needed**
 - Apply online at www.fafsa.ed.gov.
 - Start this process early. It sometimes takes 6-8 weeks for government aid.
 - If you need assistance applying, call Financial Aid at 712/274-6402.
- ✓ **Take the Computerized Placement Test (CPT)**
 - Students with an ACT composite of 22 or higher may be exempt.
 - Schedule CPT by calling the Testing Center at 712/274-6400, ext. 6443 for Sioux City; or, call Vickie Weldon in Denison at ext. 2626; call the main office in Cherokee at ext. 1240; or call Paulette Lewis in Le Mars at 712/546-7338.
- ✓ **Visit with an Academic Advisor or Admissions Rep**
 - Interpret CPT scores, select and schedule classes.
- ✓ **Register for your WITCC Classes**
 - Online – using the student tab on mywitcc.com.
 - By telephone – call 712/274-6404, or 800/352-4649, ext. 6404; for Denison at ext. 2631; for Cherokee at 712-225-0238; for Le Mars at 712-546-7338.
 - In person – in Enrollment Services (Room A300) on the Sioux City campus; or the main office on the Denison, Cherokee, or Le Mars campuses.
- ✓ **Pay your Tuition**
 - In person; by phone at 712/274-6400, ext. 1210; or online at www.witcc.edu; or the main office on the Denison, Cherokee, and Le Mars campuses.
 - Refer to Methods of Payment and Tuition Charges on the following pages of this booklet.
- ✓ **Purchase Books**
 - Online at www.witcc.edu/bookstore.
 - Bookstore hours are 7:30 a.m.–6:00 p.m. Monday-Thursday and 7:30 a.m.–5 p.m. Friday on the Sioux City campus.
 - Go to the main office at the Denison, Cherokee, or Le Mars campuses.
- ✓ **Go to Class!**

Ask about our new Bur Oak Suites!

Important Things to Know!

Enrollment Tips

Note the start and end date for classes

Not all classes start and end at the same time.

Adding a class

The last day to add a course during a semester is determined by the length of the course.

Less than 5 weeks Instructor permission required once the class has started.

5 weeks or more Last day to add: 2 calendar days after the first scheduled meeting day of the course.

Dropping or withdrawing from a class

The last day to drop a course or withdraw from all courses during a semester is determined by the scheduled length of the course. *Note the refund schedule. Dropping a course does not automatically mean a refund is issued. Students with financial aid should contact the Financial Aid Office prior to withdrawing.*

If course is less than 5 weeks:

Last day to drop or withdraw: 2 calendar days prior to the last scheduled meeting day of the class.

If course is 5 weeks or longer:

Last day to drop or withdraw: 7 calendar days prior to the last scheduled meeting day of the class.

You may drop in the following ways:

Online using the Students tab at mywitcc.com

By telephone: 712-274-6404

In person in Enrollment Services

Refund Policies

- Refund rate is based on the start date of the class and the date a student withdraws from class.
- A student must withdraw from class as noted above.
Not attending is not dropping the class. A student will be charged for the class if they do not withdraw.
- **100% refund** will be given during the first 7 calendar days (beginning with the start date of the class) of the semester for **classes that meet five or more weeks.**
- **100% refund** will be given the **day following the first day** for classes that **meet less than five weeks.**
- Student receiving financial aid should contact the Financial Aid Office prior to withdrawing from a class.

Methods of Payment

- Payment in Full**
 Pay in person, by phone, or online using the student tab on mywitcc.com. Pay by cash, check, or credit card.
- Payment by Financial Aid**
 Approved financial aid will be transferred to your account. Start this process early. It sometimes takes 6-8 weeks for government aid.
- Payment by Third Party**
 If sponsored by an agency (JTP, Vocational Rehab, etc.), sign the invoice and return it to Student Accounts (Room A526).
- FACTS Tuition Payment Plan**
 Flexible monthly payment option – apply online by selecting “FACTS Payment Plan” under the student tab on www.mywitcc.com.

SUMMER 2010

Enrollment on e-Cashier is available beginning February 18, 2010 to June 1, 2010. Full payments may be made on e-Cashier through June 1, 2010. Payment in full or payment arrangements (including automatic payment plans) are due by the first day of class. Failure to make payment or arrangements will result in disenrollment of all classes.

Last Day to Enroll Online	Required Down Payment	Number of Payments	Months of Payments
March 31	none	4	Apr.–July
April 22	10%	3	May–July
May 22	30%	2	June & July
June 1	50%	1	July only

Tuition Charges

Tuition and course fees may be changed without notice as the State Legislature and the Board of Directors of Western Iowa Tech Community College deem necessary. Tuition for Summer 2010 is listed below. *Subject to change.*

Online Tuition \$142/credit hour (no fees)

Evening Tuition \$115/credit hour

Daytime Classes:

Iowa Resident Tuition \$115/credit hour

Non-resident Tuition \$133/credit hour

Fees \$15.50/credit hour

Course fees (CF) are a one-time cost and are listed by course

Financial Aid Policies

Consequences of Withdrawal and Financial Aid

A student receiving federal financial assistance may have his/her financial aid adjusted based on his/her date of official or unofficial withdrawal. (See page 11 of the current college catalog for procedures for withdrawing from school.)

A student who officially withdraws earns aid based on the number of calendar days he/she attended. Earned aid is calculated from the beginning of the semester until the official withdrawal date up to the point that 60% of the semester has passed. After the 60% point all aid is considered earned.

For Summer Semester 2010, the student must officially withdraw on or after the 41st day (July 11, 2010) to earn 100% of his/her aid. A student attending class in only one of the five-week sessions must attend until the 20th day (June 20) of Session I; or until the 20th day (July 25) of Session II to earn 100% of his/her aid.

Procedure for Repaying the U.S. Government

If you owe a repayment of grants to the U.S. Government, you will remain ineligible for federal aid until you resolve your repayment. If you owe a repayment for grants received at WITCC, it may be possible to resolve your repayment at the Student Accounts Office. Contact the Student Accounts Office for details.

If you do not contact the Student Accounts Office within 15 days of receiving notice and schedule your repayment, you will be turned over to the U.S. Department of Education for collection. If you are referred to the Department of Education, you will remain ineligible for federal aid until the college receives notice from the Department of Education that you have re-established your eligibility.

Carefully read all correspondence received from WITCC in case there is a change in your financial obligation to the college or your financial aid eligibility.

If you have any question about the effect of the Return of Funds to the federal aid programs, contact the Financial Aid Office.

Americans with Disabilities Act (ADA)

If you have a disability, contact Michelle Fiechtner, Disability Services Coordinator, at 712-274-8733, Ext. 3216, for an appointment. She is available to discuss reasonable accommodations which might be of assistance to you.

Classes are held at the following WITCC Campus locations:

Sioux City	4647 Stone Avenue, Sioux City
Beltway Center	3415 Highway 75 North, Sioux City
Cherokee Campus and Conference Center	200 Victory Drive, Cherokee
Denison Campus	Hwy 30 East and N. 35th St., Denison
Le Mars Center	940 Lincoln Street SW, Le Mars
Mapleton Center	Highway 175 North, Mapleton

**Specific room locations will be noted on the registration schedules.
Some courses may be held in other locations.
See registration schedules.**

You've Got Email!

Once you're admitted to Western Iowa Tech, you are provided with a student email account. The college communicates important information regarding enrollment status, payment, financial aid, grades, and course information via your mywitcc.com email account.

To use your mywitcc account, follow these steps:

- ✓ Log onto witcc.edu or www.mywitcc.com
- ✓ Click on mywitcc.com
- ✓ Your mywitcc.com login name will match the name you used when you registered for classes. The login format is 'first name_last name', all lower case. Your mywitcc.com initial password will be your birthday, MMDDYY.

Need a Tutor?

Contact the Learning Achievement Center

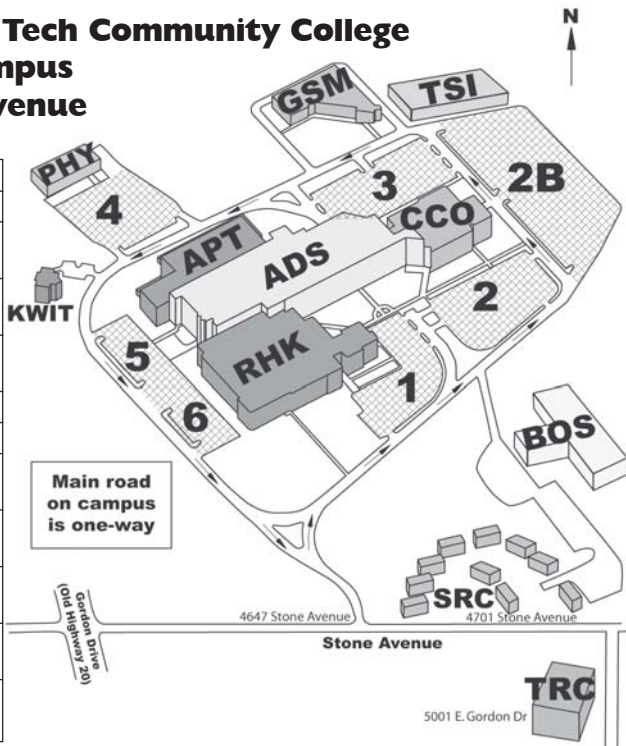
The Math Tutoring Center

FREE tutoring for all math students.
 Located in the Learning Achievement Center
 Stop in to see Linda Scott.

Sioux City Campus

**Western Iowa Tech Community College
 Sioux City Campus
 4647 Stone Avenue**

ADS	Advanced Sciences
APT	Applied Technology
BOS	Bur Oak Suites – Housing
CCO	Corporate College
GSM	Gaylord Smith Building
KWIT	KWIT/KOJI Radio
PHY	Physical Plant
RHK	Dr. Robert H. Kiser Building
SRC	Sun Ridge Court – Housing
TRC	Transportation Center
TSI	The Security Institute
I-6	Public Parking



Guaranteed Quality of Education

Western Iowa Tech Community College believes in the quality of its faculty and staff, and in the quality of instruction and technical skill competencies the College provides to students. As an expression of confidence in this belief, WITCC has established guidelines to guarantee its graduates the technical skill competencies expected by employers and the transferability of baccalaureate oriented course credits to receiving four-year colleges and universities.

A copy of the complete guarantee statement is available on request from the Enrollment Services Office at the College.



How to Read the Schedule

Course #:	Course Title:	Prerequisites:/Co-requisites:
DRF-161	Descriptive Geometry	Prereq.: DRF-113, DRF-150, or ARC-113

Special beginning and ending dates:

Begins __/__/10 and ends __/__/10









Section #:	Days Class Meets:	Times:	Credits:	Instructor:
01	MTWTH	12:00PM-3:15PM	3 cr	Helzer

Course Fee:

CF \$3

Courses with **Online** (courses taken completely online), **ICN** (courses taken via the Iowa Communications Network: multiple classrooms with two-way video/audio with an instructor at one of the sites), or **Hybrid** (courses with both a classroom and an online component) next to the Section # denote delivery method.

Visit WITCC on the Web!

-  Credit & Community Education Schedules
-  Corporate & Computer Training
-  Distance Learning Opportunities
-  Complete Academic & Financial Aid Information
-  Apply Online
-  Order Textbooks Online
-  WITCC Career Opportunities
-  And More!



www.witcc.edu



www.witcc.edu and www.mywitcc.com

NEW PROGRAMS

Check out these new programs beginning Fall 2010 at WITCC:

✓ **Arts Management ASCO Degree**

The Arts Management program provides individuals with a strong management curriculum and prepares them to work in the arts and entertainment industry, organizing and promoting the arts and events and managing facilities and budgetary needs. It also prepares students to continue their education toward a baccalaureate degree. Individuals follow a shared managerial core of courses with optional tracks in the Arts.

For more information contact: Ralph Swain, Division Chair at ext. 1274

✓ **Chemical Dependency and Co-Occurring Disorder Counseling AA Degree**

The Chemical Dependency and Co-Occurring Disorder Counseling program is a two-year AA transfer program that may be continued at a four-year institution as part of a bachelor's degree. Licensed counselors may work in facilities that provide drug and alcohol rehabilitation and mental health services. With additional education and experience, individuals may pursue such careers as Licensed Clinical Social Worker, Mental Health Counselor, Chemical Dependency Counsel, Clinical Therapist, Certified Addiction Drug Therapist, and/or Social Worker (MSW).

For more information contact: Deb Gifford at ext. 1354, Jill Moravek at ext. 1443, Rhonda Briggs at ext. 1202 or Cindy Zortman, Division Chair at ext. 1351

✓ **Motorcycle/Power Sports Repair AA Degree**

The Motorcycle/Power Sports Repair program, specializing in motorcycle technology, offers both the content and skills required of a motorcycle technician, in a hands-on learning environment. Students learn how to maintain, diagnose, repair and overhaul motorcycles, utilizing emissions-reducing technology and safety assurance.

For more information contact: Greg Strong, Division Chair at ext. 1480

✓ **Professional Photography Diploma**

The Professional Photography diploma introduces students to the photography profession and provides the basic skills needed to photograph and operate cameras and other photography equipment and software. Course content and skills are applicable to a career in Commercial Photography and for individuals wishing to pursue a baccalaureate degree.

For more information contact: Ralph Swain, Division Chair at ext. 1274

**Call WITCC
at 800.352.4649 or 712.274.8733.
The extension number of the contact
person is listed above.**

2010 Summer Semester Credit Courses Sioux City Campus

*Classes begin June 1 and end August 6, 2010,
unless otherwise noted.*

*Online courses begin June 1 and end July 26, 2010,
unless otherwise noted.*

*See page 43 for information on
WITCC's summer short courses.*

Accounting

ACC-111	Intro to Accounting			
540	Online		3 cr	
ACC-131	Principles of Accounting I			
540	Online		4 cr	ICCOC
640	Online		4 cr	
ACC-132	Principles of Accounting II			
540	Online		4 cr	ICCOC
ACC-161	Payroll Accounting			
540	Online		3 cr	ICCOC
ACC-222	Cost Accounting			
540	Online		4 cr	Staff
ACC-309	Computer Accounting			
01		Begins 6/1/2010 and ends 7/2/2010 MTWTH	1:00PM-2:55PM	1 cr Staff
ACC-311	Computer Accounting			
01		MTWTH	1:00PM-2:55PM	3 cr Staff

Administrative Assistant

See also Health Information Technology, Medical Assistant

ADM-105	Introduction to Keyboarding			
660	Hybrid	Begins 6/1/2010 and ends 7/2/2010 MTWTH	8:00AM-8:50AM	1 cr Staff
ADM-123	Document Formatting			
660	Hybrid	T	5:30PM-7:30PM	3 cr Staff
ADM-131	Office Calculators			
660	Hybrid	Begins 6/1/2010 and ends 7/2/2010 MTWTH	8:00AM-8:50AM	1 cr Staff
ADM-154	Business Communication			
01		TTH	10:30AM-12:50PM	3 cr Staff



**Don't waste your time . . .
order books online**

<http://bookstore.witcc.edu>

Administrative Assistant (con't.)

ADM-159	Proofreading and Editing				
660 Hybrid	T	7:45PM-9:45PM	3 cr	Staff	
ADM-932	Internship				
01	TBA		2 cr	Staff	

Health Information Technology:

HIT-245	Basic ICD-9-CM Coding	Prerequisite: HSC-114; Co-req.: MAP-123			
660 Hybrid	T	6:00PM-8:20PM	3 cr	Staff	

Medical Assistant:

MAP-402	Medical Law and Ethics				
540 Online			2 cr	Staff	

Agriculture

AGC-936	Occupational Experience	Prerequisite: AGC-420, AGB-437			
01			3 cr	Staff	
540 Online			3 cr	ICCOG	
AGS-331	Animal Reproduction				
540 Online			3 cr	Staff	
AGV-932	Internship	Prerequisite: AGV-121, AGV-153, AGV-161			
01			3 cr	Staff	

Air Conditioning, Heating, and Refrigeration

The Air Conditioning, Heating, and Refrigeration program includes a study of air conditioning, heating, and refrigeration on residential and light commercial equipment. Electrical theory and practical lab units are stressed. Reading and drawing schematics and blueprints are combined with actual lab experiences.

The laboratory is well equipped with tools, testing devices, demonstration models, and air conditioning, heating, and refrigeration systems for residential and commercial uses.

Employment of air conditioning, heating, and refrigeration technicians is expected to increase in the next several years. Technicians will be needed to install and maintain climate control systems in the increasing number of new residential and commercial structures, and to respond to the needs of growing concern over energy management and conservation.

For questions about Heating and Air Conditioning Technology, contact our faculty advisor Tony Bell at 712/274-8733, ext. 3213, or Greg Strong, at ext. 1480.

ELE-112	Basic Electrical Theory				
20	MW CF \$20	6:00PM-10:00PM	3 cr	Staff	
660 Hybrid	MW CF \$20	6:00PM-9:50PM	3 cr	Staff	
HCR-205	Air Conditioning Principles				
20	TTH CF \$50	6:00PM-9:30PM	3 cr	Staff	
HCR-240	Troubleshooting Air Cond. Systems	Prerequisite: HCR-205, ELE-112			
01	MTWTH CF \$50	8:00AM-9:55AM	3 cr	Bell	
HCR-715	Blueprint Reading				
01	MTW	1:30PM-2:30PM	1 cr	Bell	
HCR-850	HVACR Shop Practices	Prerequisite: ELE-112, HCR-430, HCR-410			
01	MTWTH CF \$35	10:00AM-12:55PM	4 cr	Bell	

Anthropology

See also Cultural Studies

ANT-105	Cultural Anthropology				
540 Online			3 cr	ICCOG	

Architectural Construction Engineering Technology

See also Drafting or Mechanical Engineering Technology

Industrial expansion and technological developments in the last decade have created an ever-increasing demand for qualified architectural drafters.

Program Courses include:

- Fundamentals of Technical Drafting
- Residential/Light Commercial Drafting
- Architectural Drafting Fundamentals

CAD software training is available for Pro Desktop, Architectural Desktop, Versa CAD, Pro Engineer, and Solidworks.

For questions about Architectural Drafting contact our faculty advisor Derald Sawyer x1375.

ARC-155 01	Structural Steel Drafting MTWTH CF \$30	Prerequisite: ARC-129; Co-req.: CAD-172 10:30AM-12:50PM	4 cr	Staff
DRF-161 01	Descriptive Geometry I MTWTH CF \$30	Prerequisite: DRF-113, DRF-150 or ARC-113 1:30PM-3:40PM	3 cr	Helzer

Art and Design

See also Graphic Design

ART-101 02	Art Appreciation Begins 5/20/2010 and ends 5/27/2010 MTWTHFS 8:00AM-3:00PM		3 cr	Staff
	540 Online		3 cr	ICCOG
	660 Hybrid	W 6:00PM-8:20PM	3 cr	Staff
ART-123 01	Design TTH CF \$25	9:00AM-11:50AM	3 cr	Staff
ART-133 01	Drawing Begins 6/1/2010 and ends 7/1/2010 MTWTH CF \$25	9:15AM-11:35AM	3 cr	Staff
ART-134 01	Drawing II Begins 6/1/2010 and ends 7/1/2010 MTWTH CF \$25	9:15AM-11:35AM	3 cr	Staff
ART-143 01	Painting Begins 6/2/2010 and ends 6/30/2010 MW CF \$25	1:00PM-3:20PM	3 cr	Staff

Heating and Refrigeration Training in the Evening

Heating and refrigeration systems consist of many mechanical, electrical, and electronic components, such as motors, compressors, pumps, fans, ducts, pipes, thermostats, and switches. This training will teach students the abilities to maintain, diagnose, and correct problems throughout the entire heating and refrigeration system.

ELE-112 20	Basic Electrical Theory MW CF \$15	6:00PM-10:00PM	2 cr	Staff
HCR-205 20	Air Conditioning Principles TTH CF \$20	6:00PM-9:30PM	3 cr	Staff

Art and Design (con't.)

ART-144	Painting II	Begins 6/2/2010 and ends 6/30/2010	Prerequisite: ART-143
01		MW 1:00PM-3:20PM	3 cr Staff
		CF \$25	
ART-184	Photography		
01		MW 1:00PM-3:20PM	3 cr Staff
		CF \$45	
ART-186	Digital Photography		
01		TTH 1:00PM-3:20PM	3 cr Staff
20		T 6:00PM-8:40PM	3 cr Staff
ART-203	Art History I		
540	Online		3 cr ICCOC
ART-204	Art History II		
540	Online		3 cr Staff
ART-949	Business of Art		
01		Begins 7/6/10 and ends 8/6/10	2 cr Staff
		MTWTH 10:00AM-11:30AM	

Automotive Technology

AUT-941	Practicum		
01			4 cr Sampson

Biological Sciences

See also Environmental Science

Students intending to register for BIO-169 (Human Anatomy & Physiology I) or BIO-151 (Nutrition) or BIO-116 (General Biology) need to have basic knowledge of biology and chemistry. Instructors assume that students possess the fundamental knowledge of biology and chemistry needed to benefit from the courses.

To ensure student success, a free Science placement test is available. The minimum score needed for enrollment in these courses is 60%. If this score is not achieved, the student must complete BIO-070 Basic Biological Concepts prior to enrolling in BIO-169, BIO-151, or BIO-116.

Please contact the testing center in Sioux City at 712-274-6443 to schedule an appointment to take the Science placement test. Students in our outlying campus areas can call 1-800-352-4649, ext. 2440 in Cherokee, or ext. 2621 in Denison to schedule a time to take the test. Le Mars students can call 712-546-7338.

BIO-070	Basic Biological Concepts		
01 ICN		TTH 10:30AM-12:00PM	2 cr Jorstad
02		MW 10:30AM-12:00PM	2 cr Klein
03 ICN		Begins 7/7/2010 and ends 8/4/2010	2 cr O'Neill
		MW 1:00PM-4:00PM	
540	Online		2 cr Romig
BIO-105	Introductory Biology		
01		MTWTH 10:00AM-12:00PM	4 cr Romig
		CF \$25	
540	Online		4 cr ICCOC
BIO-125	Plant Biology		
01		MTWTH 8:00AM-10:00AM	4 cr Klein
		CF \$25	
BIO-151	Nutrition		Prerequisite: BIO-070
01 ICN		MW 10:30AM-12:30PM	3 cr Jorstad
640	Online		3 cr Jorstad

Biological Sciences (con't.)

BIO-163	Essentials of Anatomy and Physiology				
01		MTWTH CF \$25	8:00AM-10:00AM	4 cr	McDonald
BIO-169	Human Anatomy and Physiology IA w/Lab				Prerequisite: BIO-070
01		MTWTH CF \$25	8:00AM-10:00AM	4 cr	Todd
02		MTW W CF \$25	8:00AM-10:00AM 10:00AM-12:00PM	4 cr	Todd
540 Online				4 cr	ICCOG
BIO-174	Human Anatomy & Physiology IIA w/Lab				Prerequisite: BIO-169
01		MTWTH CF \$25	8:00AM-10:00AM	4 cr	Romig
02		MTW TH CF \$25	8:00AM-10:00AM 1:00PM-3:00PM	4 cr	Romig
540 Online				4 cr	ICCOG
BIO-186	Microbiology				Prerequisite: BIO-116 or BIO-169
01		MTWTH CF \$25	10:00AM-12:00PM	4 cr	McDonald
02		MWTH T CF \$25	10:00AM-12:00PM 1:00PM-2:50PM	4 cr	McDonald
ENV-111	Environmental Science				
660E		T	5:30PM-7:45PM	4 cr	McDonald

Business

See also Finance, Management, or Marketing

BUS-102	Introduction to Business				
01		Begins 6/1/2010 and ends 7/2/2010 MTWTH	8:00AM-10:20AM	3 cr	Staff
540 Online				3 cr	ICCOG
BUS-124	Business Innovation				
640 Online				3 cr	Staff
BUS-130	Intro to Entrepreneurship				
540 Online				3 cr	ICCOG
BUS-185	Business Law I				
01		Begins 6/1/2010 and ends 7/2/2010 MTWTH	10:30AM-12:50PM	3 cr	Staff
540 Online				3 cr	ICCOG
BUS-186	Business Law II				Prerequisite: BUS-185
01		Begins 7/6/2010 and ends 8/6/2010 MTWTH	10:30AM-12:50PM	3 cr	Staff
540 Online				3 cr	ICCOG

Truck Driver Training

The Truck Driver Training program is designed to prepare men and women for a career as an entry-level over-the-road professional driver. The course will blend classroom training with hands-on behind-the-wheel instruction. For more information on this program please contact Perry Nelson at 712-274-6400, extension 1560.

Chemistry

CHM-122 01	Introduction to General Chemistry MTWTH CF \$25	8:00AM-10:00AM	Prerequisite: MAT-102 4 cr	Staff
CHM-132 660 Hybrid	Intro to Organic and Biochemistry MT CF \$25	6:00PM-8:30PM	Prereq.: CHM-122 or CHM-166 4 cr	Romig
CHM-166 01	General Chemistry I MWF TTH CF \$25	10:00AM-12:00PM 10:00AM-12:30PM	5 cr	Patil

Coaching

These are the four required courses to obtain a coaching certificate.

PEC-110 640 Online	Coaching Ethics, Techniques and Theory Begins 6/12/2010 and ends 6/22/2010	1 cr	Staff
PEC-115 640 Online	Athletic Development and Human Growth Begins 6/1/2010 and ends 6/11/2010	1 cr	Staff
PEC-120 640 Online	Body Structure and Function Begins 6/23/2010 and ends 7/3/2010	1 cr	Staff
PEC-126 640 Online	Athletic Injury Prevention Begins 7/6/2010 and ends 7/26/2010	2 cr	Staff

Communications

COM-723 01	Workplace Communications Begins 7/6/2010 and ends 8/6/2010 MTWTH 8:00AM-10:20AM	3 cr	Staff
02	Begins 6/1/2010 and ends 7/2/2010 MTWTH 8:00AM-10:20AM	3 cr	Staff
COM-753 01	Technical Communications Begins 7/6/2010 and ends 8/6/2010 MTWTH 8:00AM-10:20AM	3 cr	Staff

Business Innovation

BUS-124-640

Unleash your innovative abilities and transform your world

Innovation brings a competitive advantage to any occupation. Competitors continually improve their products, processes, and services every day. Advancing technology, the changing world environment, industrial structures and strategies, and evolving customer desires are just a few of the reasons business innovation is critical to your success.

Business Innovation (BUS-124-640) is an online course that is designed to help you get in touch with your new innovative mindset required for success in the 21st century. Learn to be a contributor, catalyst, and thinker within the innovation process. Develop your skills as an individual and the skills of the greater team to collaborate, using available creative resources to leverage ideas and concepts throughout the innovation process.

Computer Applications

See also **Administrative Assistant**

BCA-051 01	Fundamentals of Computer Operations Begins 7/6/2010 and ends 8/6/2010 MTWTH 10:30AM-12:50PM	2 cr	Staff
BCA-115 01	Internet Basics Begins 7/6/2010 and ends 8/6/2010 MTWTH 9:00AM-10:25AM	1 cr	Staff
BCA-147 540 Online	Basic Spreadsheets	2 cr	Staff
BCA-165 01	Basic Databases Begins 6/1/2010 and ends 7/2/2010 MTWTH 1:00PM-2:25PM	2 cr	Staff
BCA-949 01	Special Topics Mastering Smart Board Technology Begins 8/10/10 and ends 8/11/10 TW 8:00AM-5:00PM	1 cr	Staff
640 Online	Mastering PowerPoint 2007 Begins 6/1/10 and ends 7/26/10	1 cr	Staff

Computers: General

CSC-110 01	Introduction to Computers MW 8:00AM-10:20AM	3 cr	Staff
02	TTH 8:00AM-10:20AM	3 cr	Staff
03	MW 10:30AM-12:50PM	3 cr	Staff
04	TTH 10:30AM-12:50PM	3 cr	Staff
05	Begins 7/6/2010 and ends 8/6/2010 MTWTH 8:00AM-10:20AM	3 cr	Staff
20	TTH 6:00PM-8:20PM	3 cr	Staff
540 Online		3 cr	ICCOG
640 Online		3 cr	Staff

Construction

CON-136 20	Intro to Construction Shop Begins 6/2/2010 and ends 6/14/2010 MW 6:00PM-9:20PM	1 cr	Staff
CON-209 20	Introduction to Drywall Begins 6/16/2010 and ends 7/12/2010 MW 6:00PM-9:20PM CF \$10	1 cr	Staff
CON-213 20	Advanced Drywall Begins 7/14/2010 and ends 8/4/2010 MW 6:00PM-9:20PM CF \$10	1 cr	Staff

Criminal Justice

See **Police Science**

Drywall Certificate

See Sioux City Evening Courses on page 38 for information.

Cultural Studies

See also Anthropology

Dental Assisting

DEA-810 01	RDA Expanded Functions I Begins 6/3/2010 and ends 6/11/2010 THF 8:00AM-5:00PM CF \$75	2 cr	Pierce
DEA-830 640 Online	RDA Nitrous Oxide Monitoring CF \$20	1 cr	Staff

Drafting

See also Architectural Construction Engineering Technology or Mechanical Engineering Technology

CAD-170 01	Intro to CAD: Pro Desktop Begins 6/1/2010 and ends 7/1/2010 MTWTH 10:00AM-11:50AM MTWTH 12:30PM-1:45PM CF \$20	Prerequisite: DRF-113 2 cr	Helzer
660 Hybrid	MW 6:00PM-9:25PM CF \$20	2 cr	Staff
CAD-172 660 Hybrid	Intro to CAD: AutoCAD MW 6:00PM-9:25PM CF \$50	Prerequisite: DRF-113 or INT-145 2 cr	Staff
CAD-174 660 Hybrid	Intro to CAD: Pro-Engineer MW 6:00PM-9:25PM CF \$20	Prerequisite: DRF-113 2 cr	Staff
CAD-180 660 Hybrid	Intro to Solidworks MW 6:00PM-9:25PM CF \$20	Prerequisite: DRF-113 2 cr	Staff
DRF-170 01	Machine Design Drafting Begins 7/6/2010 and ends 8/5/2010 MTWTH 10:00AM-11:50AM MTWTH 12:30PM-2:30PM	Prerequisite: MFG-206 3 cr	Helzer

Drama and Theater

DRA-101 540 Online	Introduction to Theatre	3 cr	ICCOC
------------------------------	--------------------------------	------	-------

Early Childhood Education

ECE-103 540 Online	Intro to Early Childhood Education	3 cr	Staff
ECE-133 540 Online	Child Health, Safety and Nutrition	3 cr	Staff
ECE-170 540 Online	Child Growth and Development	3 cr	Staff
ECE-221 540 Online	Infant/Toddler Care and Education	3 cr	Staff
ECE-243 540 Online	Early Childhood Guidance	3 cr	Staff
ECE-287 540 Online	Exceptional Learner	3 cr	Staff

Economics

ECN-120	Principles of Macroeconomics				
01		Begins 6/1/2010 and ends 7/2/2010 MTWTH	10:30AM-12:50PM	3 cr	Staff
540 Online				3 cr	ICCOC
ECN-130	Principles of Microeconomics				
01		Begins 7/6/2010 and ends 8/5/2010 MTWTH	10:30AM-12:50PM	3 cr	Staff
540 Online				3 cr	ICCOC

Education (Paraeducator/Teacher Aide)

EDU-120	Communication, Ethics & Confidentiality				
540 Online				2 cr	Staff
EDU-121	Behavior Improvement				
540 Online				2 cr	Staff
EDU-122	Roles and Responsibilities				
540 Online				2 cr	Staff
EDU-210	Foundations of Education				
540 Online				3 cr	Staff
EDU-240	Educational Psychology				
540 Online				3 cr	ICCOC

Electrician

The Electrician program is located at the Mapleton Campus.

ELE-185	Field Installed Communication Systems				
65		MTW MTW TH	10:40AM-11:50AM 12:20PM-3:20PM 8:00AM-9:50AM	4 cr	Koettters
ELE-197	Advanced Motor Controls				
65		MTW	8:00AM-10:40AM	3 cr	Koettters

You've Got Email!

Once you're admitted to Western Iowa Tech, you are provided with a student email account. The college communicates important information regarding enrollment status, payment, financial aid, grades, and course information via your mywitcc.com email account.

To use your mywitcc account, follow these steps:

- ✓ Log onto witcc.edu or www.mywitcc.com
- ✓ Click on mywitcc.com
- ✓ Your mywitcc.com login name will match the name you used when you registered for classes. The login format is 'first name_last name', all lower case. Your mywitcc.com initial password will be your birthday, MMDDYY.

Career Resource Center

The Career Resource Center is located in Building A, Room 309 and offers a variety of job and career related activities including, workshops, career assessment, labor market information, resume/cover/letter/thank you letter writing and materials, job postings and job search resources and much more. The Career Resource Center is open to students, graduates, alumni and the public, with a specialist available for personal assistance from 8:00 a.m. to 4:30 p.m.

Electronics

ELT-402 01	Introduction to Communication Systems MTWTH CF \$15	8:00AM-9:55AM	Prerequisite: ELT-560 3 cr Staff
ELT-431 01	Telephone/Data Circuits MTWTH CF \$15	10:00AM-12:50PM	3 cr Staff
ELT-680 20	Guitar & Amplifier Electronics Begins 6/1/2010 and ends 7/22/2010 TTH	6:00PM-7:50PM	3 cr Staff
ELT-690 660 Hybrid	Technology Integration I Begins 6/1/2010 and ends 7/1/2010 TTH CF \$15	6:00PM-9:40PM	3 cr Staff
ELT-691 660 Hybrid	Technology Integration II Begins 7/6/2010 and ends 8/5/2010 TTH CF \$15	6:00PM-9:40PM	Prerequisite: ELT-690 3 cr Staff

Guitar & Amplifier Electronics

Learn a new and unique electronic musical skill today. The *Guitar & Amplifier Electronics* course prepares you to set up and make routine repairs to electric guitars and amplifiers.

Specific training will focus on:

- Necks, bridges, and pickups on solid and hollow body guitars.
- Controls, wiring, connectors and speakers of amplifiers.



ELT-680 Guitar & Amplifier Electronics

No previous electronics or musical experience required.

For more information on the Guitar and Amplifier Electronics course call Donnin Custer at 274-6400, ext. 1392, or Greg Strong, ext. 1480.

LEARN TO INSTALL ALL YOUR SMART HOME TECHNOLOGY EQUIPMENT

With Technology Integration classes at Western Iowa Tech, students will master the installation, integration, and troubleshooting of the following automated home sub-systems: **Home Security, Audio/Video, Computer Networks, Electrical Wiring, HVAC (Heating/Air Conditioning Systems), Cable/Satellite, Broadband, Telecommunications, and Structured Wiring.**

The classes offered are:

ELT-690-660 Tech Integration I, meets TTH, 6:00-9:40 p.m., 6/1 to 7/1

ELT-691-660 Tech Integration II, meets TTH, 6:00-9:40 p.m., 7/6 to 8/5

These classes will prepare students for the national certification exams which can be taken at the Western Iowa Tech Testing Center. For more information about these classes, please call Greg Strong at (712) 274-6400, ext. 1480, or e-mail strongg@witcc.edu.

Emergency Medical Services

EMS-110	EMS First Responder				
660 Hybrid	M CF \$75	6:00PM-10:00PM	2 cr	Staff	
EMS-210	EMT Basic				
01	Begins 6/1/2010 and ends 8/6/2010 TWTH CF \$150	9:15AM-2:05PM	6 cr	Sudrla	

English

ENG-010	Fundamentals of English				
01	MTWTH	10:30AM-11:35AM	3 cr	Staff	
02	MTWTH	1:00PM-2:05PM	3 cr	Staff	
20	MW	6:00PM-8:20PM	3 cr	Staff	
ENG-020	Fundamentals of Writing				
01	MTWTH	9:15AM-10:20AM	3 cr	Staff	
20	TTH	6:00PM-8:20PM	3 cr	Staff	
ENG-105	Composition I				
01	MTWTH	10:30AM-11:35AM	3 cr	Staff	
02	Begins 7/6/2010 and ends 8/6/2010 MTWTH	8:00AM-10:20AM	3 cr	Staff	
03	Begins 6/1/2010 and ends 7/2/2010 MTWTH	1:00PM-3:20PM	3 cr	Staff	
04 ICN	MW	8:00AM-10:20AM	3 cr	Staff	
20	MW	6:00PM-8:20PM	3 cr	Staff	
540 Online			3 cr	ICCOC	
640 Online			3 cr	Staff	
664 Hybrid	Begins 7/7/2010 and ends 8/4/2010 MW	9:15AM-10:25AM	3 cr	Staff	

Non-credit English as a Second Language (ESL)

Non-credit English as a Second Language (ESL) classes are free, offered in the daytime and evenings, and are from beginning basic to advanced (Pre-GED) levels.

Just follow these 3 easy steps:

1. Call WITCC at (712) 274-6400 or 800-352-4649 and ask for Pamela Woolridge or Chris Case.
2. Schedule a placement test with Pamela or Chris.
3. Meet with an advisor after the test to find out when your class starts.

**Contact Chris Case at 274-6400, extension 1285 or
Pamela Woolridge at extension 1854.**

Unique Plan of Study information begins on page 65.

English (con't.)

ENG-106	Composition II			Prerequisite: ENG-105
03	Begins 7/6/2010 and ends 8/6/2010	MTWTH	1:00PM-3:20PM	3 cr Staff
04 ICN	TTH		8:00AM-10:20AM	3 cr Staff
20	TTH		6:00PM-8:20PM	3 cr Staff
540 Online				3 cr ICCOC
ENG-150	Fundamentals of English Grammar			
540 Online				3 cr Staff

Environmental Science

ENV-111	Environmental Science			
540 Online				4 cr ICCOC
660E	T		5:30PM-7:45PM	4 cr McDonald

Finance

FIN-101	Principles of Banking			
540 Online				3 cr ICCOC
FIN-121	Personal Finance			
540 Online				3 cr Staff
FIN-130	Principles of Finance			Prerequisite: ACC-132
540 Online				3 cr ICCOC

Foreign Language

FLS-101	Spanish for Professionals: Health Care			
660 Hybrid	Begins 6/1/2010 and ends 6/29/2010	T	6:00PM-8:50PM	1 cr Staff
FLS-141	Elementary Spanish I			
01	Begins 6/1/2010 and ends 7/2/2010	MTWTH	1:00PM-4:00PM	4 cr Staff
FLS-142	Elementary Spanish II			Prerequisite: FLS-141
01	Begins 6/1/2010 and ends 6/29/2010	MTWTH	1:00PM-4:00PM	4 cr Staff
FLS-231	Intermediate Spanish I			Prerequisite: FLS-142
01	Begins 6/1/2010 and ends 6/29/2010	MTWTH	9:15AM-11:35AM	3 cr Staff

Geography

GEO-121	World Regional Geography			
540 Online				3 cr ICCOC

Graphic Design

GRA-305	Photoshop II for PCs			Prerequisite: GRA-304
01	W		9:00AM-11:50AM	1 cr Staff

Health Information Technology

See also Administrative Assistant, Health Sciences, or Medical Assistant

HIT-245	Basic ICD-9-CM Coding			Prerequisite: HSC-114; Co-req.: MAP-123
660 Hybrid	T		6:00PM-8:20PM	3 cr Staff



Don't waste your time . . .order books online
<http://bookstore.witcc.edu>

Health Sciences

HSC-105	Intro to Health Occupations	Co-requisite: HSC-245, BCA-115
540 Online		1 cr Staff
HSC-109	Health Careers & Teams	
540 Online		3 cr Staff
HSC-111	Issues in Health and Society	
540 Online		3 cr Staff
HSC-114	Medical Terminology	
540 Online		3 cr ICCOC
640 Online		3 cr Staff

Mandatory Reporter: Child and Dependent Adult Abuse

This training is required for mandatory reporters of child and dependent adult abuse in Iowa and students enrolled in nursing and allied health courses. You can contact Enrollment Services to receive a separate flyer or to register for the following non-credit courses. For information, contact Don Young, ext. 1355 or youngd@witcc.edu.

Child and Dependent Adult Abuse Fee: \$33.00

10/FY-CNUR-1030-11 May 11, 2010 Location A139
10/FY-CNUR-1030-12 June 15, 2010 Location TBA
10/FY-CNUR-1030-01 July 20, 2010 Location TBA
10/FY-CNUR-1030-02 August 31, 2010 Location TBA

ONLINE: January 1, 2009 to June 30, 2010

FEES: \$33

Online: Child and Dependent Adult Abuse Reporting	10/FY-CNUR-6004-641
Online: Mandatory Reporting: Child Abuse	10/FY-CNUR-6002-641
Online: Dependent Adult Abuse	10/FY-CNUR-6003-641

HOME STUDY: January 1, 2009 to June 30, 2010

FEES: \$33

Home Study: Child and Dependent Adult Abuse Reporting	10/FY-CNHS-1065-02
Home Study: Mandatory Reporting: Child Abuse	10/FY-CNHS-1009-02
Home Study: Dependent Adult Abuse	10/FY-CNHS-1015-02

Certified Personal Trainer

Interested in a career where you would work with clients developing an individual diet and exercise program? Classes start in the fall. Get your CPT's completed now. For more information, call Linda Mercer at 712-274-6400, ext. 1451.

HSC-270-660	Clinical Exercise Testing, meets F, 11 a.m.-1 p.m.
BIO-151	Nutrition, see page 31 for options
BIO-169	Human Anatomy & Physiology IA w/Lab
HSC-272	Certified Personal Trainer
BIO-174	Human Anatomy & Physiology IIA w/Lab

Interested in working with doctors in the operating room? Surgical Technology classes start this fall. Get your CPT's taken now.

Health Sciences (con't.)

HSC-122 20	English/Spanish Medical Terminology MTH	6:00PM-8:50PM	3 cr	Staff
HSC-123 540 Online	Transcultural Concepts in Health/Illness		1 cr	Staff
HSC-138 540 Online	Clinical Calculations in Healthcare		2 cr	Staff
HSC-143 540 Online	Pharmacology		3 cr	Staff
HSC-148 01	Medication Aide	Begins 6/1/2010 and ends 7/1/2010 TTH	3 cr	Staff
HSC-155 540 Online	Basic ECG Interpretation		2 cr	Staff

Certified Nursing Assistant

Students need to register for the same section of HSC-173 and HSC-174.

HSC-173 01	Nurse Aide Theory	Begins 6/2/2010 and ends 6/21/2010 MWTH	3 cr	Staff	Co-requisite: HSC-174
		8:00AM-2:30PM CF \$30			
	02	Begins 6/28/2010 and ends 7/19/2010 MWTH	3 cr	Staff	
		8:00AM-2:30PM CF \$30			
	660 Hybrid	Begins 6/1/2010 and ends 7/16/2010 CF \$30	3 cr	Staff	
HSC-174 01	Nurse Aide Clinical	Begins 6/23/2010 and ends 7/1/2010 MWTH	1 cr	Staff	Co-requisite: HSC-173
		8:00AM-2:30PM CF \$165			
	02	Begins 7/21/2010 and ends 7/28/2010 MWTH	1 cr	Staff	
		8:00AM-2:30PM CF \$165			
	03	Begins 7/21/2010 and ends 7/28/2010 MWTH	1 cr	Staff	
		8:00AM-2:30PM CF \$165			
HSC-218 540 Online	Clinical Pathology for Allied Health		3 cr	Staff	Prerequisite: HSC-114, BIO-169 or BIO-163
HSC-245 540 Online	Team Building		1 cr	Staff	
HSC-255 660 Hybrid	Physical Assessment of Adults	TBA	3 cr	Staff	
		TBA CF \$20			

Career Resource Center

The Career Resource Center is located in Building A, Room 309 and offers a variety of job and career related activities including, workshops, career assessment, labor market information, resume/cover/letter/thank you letter writing and materials, job postings and job search resources and much more. The Career Resource Center is open to students, graduates, alumni and the public, with a specialist available for personal assistance from 8:00 a.m. to 4:30 p.m.

History

HIS-110	Western Civilization: Ancient to Early Modern				
20	TTH	6:00PM-8:20PM	3 cr	Staff	
540 Online			3 cr	Staff	
660 Hybrid ICN	Begins 6/1/2010 and ends 7/1/2010 TTH	10:30AM-12:50PM	3 cr	Staff	
HIS-111	Western Civilization: Early Modern to Present				
540 Online			3 cr	Staff	
660 Hybrid ICN	Begins 7/6/2010 and ends 8/5/2010 TTH	10:30AM-12:50PM	3 cr	Staff	
HIS-151	U.S. History to 1877				
01	Begins 6/1/2010 and ends 7/2/2010 MTWTH	9:15AM-11:35AM	3 cr	Staff	
02	Begins 5/20/2010 and ends 5/27/2010 MTWTHFS	8:00AM-3:00PM	3 cr	Staff	
540 Online			3 cr	ICCOC	
HIS-152	U.S. History Since 1877				
01	Begins 7/6/2010 and ends 8/6/2010 MTWTH	9:15AM-11:35AM	3 cr	Staff	
540 Online			3 cr	ICCOC	
HIS-211	Modern Asian History				
540 Online			3 cr	Staff	
HIS-251	U.S. History 1945 to Present				
540 Online			3 cr	ICCOC	
HIS-268	U.S. at War: Vietnam War, American Experience in Vietnam				
540 Online			3 cr	Staff	

Industrial Plant Technology

See also Manufacturing or Robotics and Automated Technology

The Industrial Plant Technology course work prepares technicians to operate, troubleshoot and maintain motors and controls, mechanical systems, heating and cooling equipment, electronic, and pneumatic and hydraulic systems.

The course delivery model utilizes an individualized learning approach, allowing for rapid progression through the courses. Lectures are self-paced and computer based. Students can access courses online or via campus computer network. Receiving hands-on experience is essential for success in this career. Labs in this program are done in the new state-of-the-art Advanced Manufacturing Lab, on the WITCC Sioux City campus. Due to the flexibility of this program students may begin the program at multiple entry points throughout the year.

For questions about Industrial Plant Technology contact faculty advisor Greg Strong at ext. 1480 or strongg@witcc.edu.

BPT-114	Instrumentation I				
660 Hybrid	TTH	5:00PM-9:00PM	2 cr	Staff	
BPT-115	Instrumentation II				
660 Hybrid	TTH	5:00PM-9:00PM	2 cr	Staff	
EGT-142	Fluid Power I				
660 Hybrid	TTH	5:00PM-9:00PM	2 cr	Staff	
EGT-143	Fluid Power II				
660 Hybrid	TTH	5:00PM-9:00PM	2 cr	Staff	
ELT-102	Blueprint Reading				
660 Hybrid	TTH	5:00PM-9:00PM	2 cr	Staff	
ELT-110	Electronics				
660 Hybrid	TTH	5:00PM-9:00PM	2 cr	Staff	

Industrial Plant Technology (con't.)

ELT-118	Programmable Controllers				
660 Hybrid	TTH	5:00PM-9:00PM	2 cr	Staff	
ELT-150	Basic Electrical Theory				
660 Hybrid	TTH	5:00PM-9:00PM	2 cr	Staff	
ELT-208	Motor Control				
660 Hybrid	TTH	5:00PM-9:00PM	2 cr	Staff	
ELT-740	Industrial Safety Electrical Systems				
660 Hybrid	TTH	5:00PM-9:00PM	1 cr	Staff	
ELT-780	Electromechanical Control Systems				
660 Hybrid	TTH	5:00PM-9:00PM	2 cr	Staff	
IND-111	Industrial Safety Mechanical Systems				
660 Hybrid	TTH	5:00PM-9:00PM	1 cr	Staff	
IND-141	Power Transmission				
660 Hybrid	TTH	5:00PM-9:00PM	2 cr	Staff	
IND-180	Industrial Heating & Cooling				
660 Hybrid	TTH	5:00PM-9:00PM	2 cr	Staff	
MFG-520	Predictive Maintenance				
660 Hybrid	TTH	5:00PM-9:00PM	2 cr	Staff	

Information Systems

See also Computer Applications

CIS-171	Java				
540 Online			3 cr	Bingen	
CIS-606	Visual Basic.NET I				
540 Online			3 cr	Bingen	

Literature

LIT-101	Introduction to Literature				
02	Begins 7/6/2010 and ends 8/6/2010 MTWTH 1:00PM-3:20PM	Prerequisite: ENG-105	3 cr	Staff	
540 Online			3 cr	Staff	
LIT-105	Children's Literature				
540 Online			3 cr	ICCOC	
LIT-110	American Literature to Mid-1800s	Prerequisite: ENG-105, LIT-101			
540 Online			3 cr	Staff	
LIT-111	American Literature since Mid-1800's	Prerequisite: ENG-105, LIT-101			
540 Online			3 cr	ICCOC	
LIT-124	American Poetry	Prerequisite: ENG-105 or LIT-101			
540 Online			3 cr	Staff	
LIT-150	World Literature I	Prerequisite: ENG-105, LIT-101			
540 Online			3 cr	ICCOC	
LIT-161	The Short Story	Prerequisite: ENG-105 or LIT-101			
540 Online			3 cr	ICCOC	
LIT-189	Women and Literature	Prerequisite: ENG-105			
540 Online			3 cr	Staff	
LIT-931	Integrated Experiential Learning: Shakespeare & Co				
01	6:00PM-10:00PM		3 cr	Staff	

The Math Tutoring Center

FREE tutoring for all math students. Located in the Learning Achievement Center Stop in to see Linda Scott, ext. 1352.

Management

See also Business

MGT-101	Principles of Management			
01	Begins 7/6/2010 and ends 8/6/2010 MTWTH 8:00AM-10:20AM	3 cr	Staff	
540 Online		3 cr	ICCOC	
MGT-130	Principles of Supervision			
540 Online		3 cr	ICCOC	
MGT-170	Human Resource Management			
540 Online		3 cr	Staff	
MGT-178	Employment Law			
540 Online		3 cr	ICCOC	
MGT-938	On-the-Job Training			
01		2 cr	Staff	

Manufacturing

See also Mechanical Engineering, Industrial Plant Technology, or Robotics and Automation

Marketing

See also Business

MKT-110	Principles of Marketing		
540 Online		3 cr	ICCOC
MKT-140	Principles of Selling		
540 Online		3 cr	ICCOC
MKT-150	Principles of Advertising		
540 Online		3 cr	ICCOC

Mass Media Studies

MMS-941	Practicum		
01		2 cr	Staff

Mathematics

All students are required to take the CPT placement test. This test is designed to help students/advisors choose the most appropriate math course based on individual scores. For more information, contact the Testing Center at 712-274-6443.

Math tutors are available free of charge. These professional tutors will help students Monday through Friday at our campus Student Success Center located in the Learning Achievement Center. For more information, contact the center at 712-274-8733, ext. 1489.

For information about WITCC math courses, please contact the division chair at 712-274-8733, ext. 1351.

MAT-041	Basic Math			
01	MTWTH	8:00AM-9:05AM	3 cr	Staff
02	MTWTH	1:00PM-2:05PM	3 cr	Staff
03 ICN	MW	10:30AM-12:50PM	3 cr	Staff
04	Begins 6/1/2010 and ends 7/2/2010 MTWTH 10:30AM-12:50PM		3 cr	Staff
20	MW	6:00PM-8:20PM	3 cr	Staff

Mathematics (con't.)

MAT-063	Elementary Algebra			Prerequisite: MAT-041
01	MTWTH	8:00AM-9:25AM	4 cr	Staff
02 ICN	MW	12:30PM-3:30PM	4 cr	Staff
03	Begins 6/1/2010 and ends 7/2/2010 MTWTH	10:30AM-11:55AM	4 cr	Staff
20	TTH	6:00PM-9:00PM	4 cr	Staff
540 Online			4 cr	Staff
MAT-102	Intermediate Algebra			Prerequisite: MAT-063
01	MTWTH	8:00AM-9:25AM	4 cr	Staff
02	MTWTH	10:30AM-11:55AM	4 cr	Staff
03 ICN	TTH	12:30PM-3:30PM	4 cr	Staff
20	TTH	6:00PM-9:00PM	4 cr	Staff
540 Online			4 cr	Staff
MAT-110	Math for Liberal Arts			Prerequisite: MAT-102
540 Online			3 cr	ICCOG
MAT-117	Math for Elementary Teachers			Prerequisite: MAT-102
540 Online			3 cr	ICCOG
MAT-121	College Algebra			Prerequisite: MAT-102
01	MTWTH	8:00AM-9:25AM	4 cr	Staff
02	MTWTH	10:00AM-11:25AM	4 cr	Staff
03	Begins 6/1/2010 and ends 7/2/2010 MTWTH	1:00PM-4:00PM	4 cr	Staff
20	TTH	6:00PM-9:00PM	4 cr	Staff
540 Online			4 cr	Staff
MAT-130	Trigonometry			Prerequisite: MAT-121
01	MTWTH	11:55AM-1:00PM	3 cr	Staff
MAT-156	Statistics			Prerequisite: MAT-121, MAT-110 or MAT-141
540 Online	Begins 6/1/10 and ends 7/26/10		3 cr	ICCOG
MAT-157	Statistics			Prerequisite: MAT-121, MAT-110 or MAT-141
02	MTWTH	7:45AM-10:45AM	4 cr	Staff
MAT-201	Applied Calculus			Prerequisite: MAT-121
540 Online			5 cr	Staff
MAT-211	Calculus I			Prerequisite: MAT-130 or MAT-129
01	MTWTH	1:00PM-3:00PM	5 cr	Staff
MAT-219	Calculus III			Prerequisite: MAT-217
01	MTWTH	8:00AM-9:25AM	4 cr	Staff
MAT-772	Applied Math			Prerequisite: MAT-041
01	Begins 6/1/2010 and ends 7/2/2010 MTWTH	10:30AM-12:50PM	3 cr	Staff
02	MTWTH	1:00PM-2:05PM	3 cr	Staff
03	Begins 7/6/2010 and ends 8/6/2010 MTWTH	10:30AM-12:50PM	3 cr	Staff
20 ICN	MW	6:00PM-8:20PM	3 cr	Staff
540 Online			3 cr	Staff
MAT-779	Applied Trigonometry			Prerequisite: MAT-775
01	MTWTH	8:00AM-9:05AM	3 cr	Staff

Mechanical Engineering Technology

See also Drafting

CAD-170 01	Intro to CAD: Pro Desktop Begins 6/1/10 and ends 7/1/10 MTWTH 10:00AM-1:45PM	2 cr	Helzer
DRF-170 01	Machine Design Drafting Begins 7/6/10 and ends 8/5/10 MTWTH 10:00AM-2:30PM	3 cr	Helzer
MFG-207 01	Manufacturing Processes II MTWTH 8:00AM-9:50AM	3 cr	Helzer

Medical Assistant

See also Administrative Assistant

MAP-402 540 Online	Medical Law and Ethics	2 cr	Staff
------------------------------	-------------------------------	------	-------

Music

MUA-101 01	Applied Voice TBA CF \$235	TBA	1 cr	Staff
MUA-119 01	Class Piano TBA	TBA	1 cr	Staff
MUA-120 01	Applied Piano TBA CF \$235	TBA	1 cr	Staff
MUA-124 01	Applied Guitar TBA CF \$235	TBA	1 cr	Staff
MUA-126 01	Applied Strings TBA CF \$235	TBA	1 cr	Staff
MUA-143 01	Applied Brass TBA CF \$235	TBA	1 cr	Staff
MUA-170 01	Applied Woodwind TBA CF \$235	TBA	1 cr	Staff
MUA-180 01	Applied Percussion TBA CF \$235	TBA	1 cr	Staff
MUS-100 01	Music Appreciation Begins 5/20/2010 and ends 5/27/2010 MTWTHFS 8:00AM-3:00PM	3 cr	Staff	
02 ICN	TTH 8:00AM-10:20AM	3 cr	Staff	
540 Online		3 cr	ICCOG	
MUS-205 540 Online	Jazz History and Appreciation	3 cr	ICCOG	

Network Administration and Security

NET-123 660 Hybrid	Computer Hardware Basics Begins 6/1/2010 and ends 6/30/2010 MW 6:00PM-9:40PM CF \$15	4 cr	Price
NET-132 660 Hybrid	Operating Systems Software Basics Begins 7/7/2010 and ends 8/4/2010 MW 6:00PM-9:40PM CF \$333	3 cr	Price

Network Administration & Security (con't.)

NET-155 20	Intro to Wireless Networks TTH CF \$15	Prerequisite: NET-132, NET-123 6:00PM-9:40PM	3 cr	Price
NET-501 01	Basic Linux Operating System MTWTH	10:00AM-11:50AM	3 cr	Prerequisite: NET-132 Wellsfry
NET-543 01	MS Server 08 Application Infrastructure MCTS MTWTH	8:00AM-9:50AM	3 cr	Prereq.: NET-520 Wellsfry

Nursing

PNN-833 01 ICN	Supervision and Management Concepts In Health Care Begins 5/20/2010 and ends 5/27/2010 MTWTHFS CF \$20	8:00AM-3:00PM	3 cr	Staff
--------------------------	--	---------------	------	-------

Philosophy

PHI-101 01	Introduction to Philosophy Begins 7/6/2010 and ends 8/6/2010 MTWTH	10:30AM-12:50PM	3 cr	Staff
540 Online			3 cr	ICCOG
PHI-105 01	Introduction to Ethics Begins 6/1/2010 and ends 7/1/2010 MTWTH	10:30AM-12:50PM	3 cr	Staff
540 Online			3 cr	ICCOG
PHI-111 540 Online	Basic Reasoning		3 cr	Staff

Physical Education

See also Coaching

PEA-117 01	Bowling I Begins 6/1/2010 and ends 7/2/2010 MWF CF \$85	2:00PM-3:50PM	1 cr	Staff
PEA-134 01	Golf I Begins 6/1/10 and ends 7/1/10 TBA CF \$30	8:00AM-11:00AM	1 cr	Staff
PEA-148 20	Physical Fitness I T CF \$10	6:00PM-8:40PM	2 cr	Staff

These are the four required courses to obtain a coaching certificate.

PEC-110 640 Online	Coaching Ethics, Techniques and Theory Begins 6/12/2010 and ends 6/22/2010	1 cr	Staff
PEC-115 640 Online	Athletic Development and Human Growth Begins 6/1/2010 and ends 6/11/2010	1 cr	Staff
PEC-120 640 Online	Body Structure and Function Begins 6/23/2010 and ends 7/3/2010	1 cr	Staff
PEC-126 640 Online	Athletic Injury Prevention Begins 7/6/2010 and ends 7/26/2010	2 cr	Staff

Physical Science

PHS-120 540 Online	Exploring Physical Science	4 cr	Patil
PHS-151 540 Online	Introduction to Astronomy	3 cr	ICCOG

Physical Therapist Assistant

PTA-423	Clinical Affiliation III and Seminar	Prerequisite: PTA-422
01	Begins 6/1/2010 and ends 7/2/2010 8:00AM-5:00PM	3 cr Staff
CF \$40		

Police Science Technology

CRJ-100	Introduction to Criminal Justice		
540 Online		3 cr	ICCOC
CRJ-101	Ethics in Criminal Justice		
540 Online		3 cr	Self
CRJ-110	Patrol Procedures		
540 Online		3 cr	Self
CRJ-120	Intro to Corrections		
540 Online		3 cr	ICCOC
CRJ-133	Constitutional Criminal Procedure		
540 Online		3 cr	ICCOC

Political Science

POL-111	American National Government		
540 Online		3 cr	ICCOC
POL-112	American State and Local Government		
01	Begins 6/1/2010 and ends 7/1/2010 MTWTH 10:30AM-12:50PM	3 cr	Staff
540 Online		3 cr	ICCOC
POL-201	The U.S. Constitution		
540 Online		3 cr	ICCOC

Psychology

PSY-102	Human & Work Relations		
01	Begins 6/1/2010 and ends 7/2/2010 MTWTH 8:00AM-10:20AM	3 cr	Staff
02	Begins 7/6/2010 and ends 8/6/2010 MTWTH 8:00AM-10:20AM	3 cr	Staff
540 Online		3 cr	ICCOC
PSY-111	Introduction to Psychology		
01	Begins 6/1/2010 and ends 7/2/2010 MTWTH 8:00AM-10:20AM	3 cr	Staff
02	Begins 6/1/2010 and ends 7/2/2010 MTWTH 10:30AM-12:50PM	3 cr	Staff
03	Begins 7/6/2010 and ends 8/6/2010 MTWTH 10:30AM-12:50PM	3 cr	Staff
04	Begins 5/20/2010 and ends 5/27/2010 MTWTHFS 8:00AM-3:00PM	3 cr	Staff
20 ICN	MW 6:00PM-8:20PM	3 cr	Staff
540 Online		3 cr	ICCOC

Pharmacy Technician

PHARMACY TECHNICIAN

Classes start this fall.

PHR-105	Introduction to Pharmacy Technician
PHR-120	Pharmacology for Pharmacy Technician
PHR-941	Practicum

Psychology (con't.)

PSY-121	Developmental Psychology		Prerequisite: PSY-111
01	Begins 6/1/2010 and ends 7/2/2010 MTWTH 10:30AM-12:50PM	3 cr	Staff
02 ICN	TTH 1:00PM-3:20PM	3 cr	Staff
540 Online		3 cr	ICCOG
PSY-211	Psychology of Adjustment		Prerequisite: PSY-111
540 Online		3 cr	ICCOG
PSY-222	Child Psychology		Prerequisite: PSY-111
540 Online		3 cr	Staff
PSY-224	Adolescent Psychology		Prerequisite: PSY-111
540 Online		3 cr	Staff
PSY-241	Abnormal Psychology		Prerequisite: PSY-111
01	Begins 7/6/2010 and ends 8/6/2010 MTWTH 10:30AM-12:50PM	3 cr	Staff
540 Online		3 cr	ICCOG
PSY-251	Social Psychology		Prerequisite: PSY-111
540 Online		3 cr	ICCOG
PSY-261	Human Sexuality		Prerequisite: PSY-111
540 Online		3 cr	ICCOG

Reading

RDG-038	College Prep Reading I		
01	Begins 6/1/2010 and ends 7/1/2010 MTWTH 8:00AM-10:20AM	3 cr	Staff
02	Begins 7/6/2010 and ends 8/6/2010 MTWTH 1:00PM-3:20PM	3 cr	Staff
RDG-039	College Prep Reading II		
01	Begins 6/1/2010 and ends 7/1/2010 MTWTH 10:30AM-12:50PM	3 cr	Staff
02	Begins 7/6/2010 and ends 8/6/2010 MTWTH 8:00AM-10:20AM	3 cr	Staff
20	MW 6:00PM-8:20PM	3 cr	Staff

Religion

REL-101	Survey of World Religions		
540 Online		3 cr	ICCOG
REL-150	Introduction to the Bible		
540 Online		3 cr	Staff

PLATO Online Learning Program

The PLATO online learning program is a self-paced learning tool that helps improve skills in reading, sentence skills, science, and math. The program is useful for both current and prospective students wishing to enhance their academic skills or raise CPT scores. Student Success Center staff will create a login for interested students and provide instructions for accessing the program. WITCC students can access this program free of charge.

To find out more about Student Success Center services, contact Tawnya Beermann, Student Success Center Director, at (712) 274-6400, ext. 1491.

Robotics and Automation

The Robotics and Automation program focuses on a curriculum designed to introduce students to high-tech computerized industrial automated manufacturing processes and techniques.

The goal of the Robotics and Automation program is to provide the resources and instruction necessary to allow students an opportunity for entry-level employment as an instrumentation technician.

Employment opportunities exist in almost all types of industrial product manufacturers and processors.

Courses include:

Programmable Logic Controllers, PLC Applications, Automation Systems, Industrial Electronics, Advanced Automation Systems/Robotics, Industrial Systems, Fluid Power, Computer Integrated Manufacturing (CIM) Systems I, Process Control, Electrical Control, and Process Technology Projects.

For questions about Robotics and Automation, contact our faculty advisor Carman Lynner, 712-274-6400, ext. 1499, or Greg Strong, ext. 1480.

BPT-114	Instrumentation I				
660 Hybrid	TTH	5:00PM-9:00PM	2 cr	Staff	
BPT-115	Instrumentation II				
660 Hybrid	TTH	5:00PM-9:00PM	2 cr	Staff	
EGT-142	Fluid Power I				
660 Hybrid	TTH	5:00PM-9:00PM	2 cr	Staff	
EGT-143	Fluid Power II				
660 Hybrid	TTH	5:00PM-9:00PM	2 cr	Staff	

Sociology

SOC-110	Introduction to Sociology				
01	Begins 6/1/2010 and ends 7/2/2010 MTWTH	8:00AM-10:20AM	3 cr	Staff	
02	Begins 7/6/2010 and ends 8/6/2010 MTWTH	10:30AM-12:50PM	3 cr	Staff	
03	Begins 5/20/2010 and ends 5/27/2010 MTWTHFS	8:00AM-3:00PM	3 cr	Staff	
540 Online			3 cr	ICCOG	
640 Online			3 cr	Staff	
SOC-115	Social Problems				Prerequisite: SOC-110
540 Online			3 cr	ICCOG	
SOC-120	Marriage and Family				
01	Begins 6/1/2010 and ends 7/2/2010 MTWTH	10:30AM-12:50PM	3 cr	Staff	
540 Online			3 cr	Staff	
SOC-160	Introduction to Social Work				
540 Online			3 cr	ICCOG	
SOC-200	Minority Group Relations				
540 Online			3 cr	ICCOG	
SOC-210	Men, Women and Society				
540 Online			3 cr	Staff	
SOC-220	Sociology of Aging				
540 Online			3 cr	Staff	



Don't waste your time . . .order books online

<http://bookstore.witcc.edu>

Speech

SPC-112	Public Speaking				
01	Begins 5/20/2010 and ends 5/27/2010 MTWTHFS 8:00AM-3:00PM	3 cr	Staff		
02	Begins 6/1/2010 and ends 7/1/2010 MTWTH 10:30AM-12:50PM	3 cr	Staff		
03	Begins 7/6/2010 and ends 8/6/2010 MTWTH 10:30AM-12:50PM	3 cr	Staff		
04	Begins 6/1/2010 and ends 7/1/2010 MTWTH 1:00PM-3:20PM	3 cr	Staff		
20	TTH 6:00PM-8:20PM	3 cr	Staff		
05	Begins 7/6/2010 and ends 8/6/2010 MTWTH 1:00PM-3:20PM	3 cr	Staff		
06	Begins 5/20/2010 and ends 5/27/2010 MTWTHFS 8:00AM-3:00PM	3 cr	Staff		
540 Online		3 cr	ICCOC		
SPC-122	Interpersonal Communication				
01	Begins 6/1/10 and ends 7/1/10 MTWTH 1:00PM-3:20PM	3 cr	Staff		
20	MW 6:00PM-8:20PM	3 cr	Staff		
540 Online		3 cr	ICCOC		

Student Development

SDV-114	Strategies for Academic Success				
01	Begins 6/1/2010 and ends 7/2/2010 MTWTH 8:00AM-10:20AM	3 cr	Staff		
02	Begins 7/6/2010 and ends 8/6/2010 MTWTH 8:00AM-10:20AM	3 cr	Staff		
SDV-153	Pre-Employment Strategies				
01	Begins 6/1/2010 and ends 7/2/2010 MTWTH 9:15AM-10:55AM	2 cr	Staff		
02	Begins 7/6/2010 and ends 8/6/2010 MTWTH 9:15AM-10:55AM	2 cr	Staff		
540 Online		2 cr	ICCOC		
SDV-949	Exploring Career Options				
20	Begins 7/6/2010 and ends 8/3/2010 T 5:30PM-8:30PM	1 cr	Staff		

Video Game Design

Video Game Design is a program of study in game design, interactive software development, and programming. Students develop skills and technical knowledge that apply to traditional artistry, 3D modeling, animation, fundamentals of game engine development, and artificial intelligence for games. They develop an understanding of the full game development life cycle through the art and design process and are able to design, develop, test, and deploy interactive software. With an understanding of the full cycle of creating game software students can assume responsibility for a specific job within this cycle. Graduates could pursue a career as a 3D Modeler, Animator, Game Support Specialist, Computer Programmer, Game Analyst, and more.

See also ART-123 and GRA-305.

For more information, contact Dr. Frank Heffner at (712) 274-6400, ext. 1426; heffnef@witcc.edu.

CIS-165	Advanced C++			Prerequisite: CIS-162
01	MTWTH 9:00AM-11:30AM	4 cr	Bingen	

Welding

The Welding field is an amazing field of study full of career opportunities. According to the U.S. Department of Labor, the rate of pay is \$14 to \$22 an hour nationwide. Our graduates have earned from \$20,000 to start and \$45,000–\$50,000 or more depending on qualifications.



Upon completion of the first and second semesters, the student will receive a diploma in qualification welding. During the second term, the student will learn the required competencies to meet code requirements for plate welding, blueprint reading, and fabrication skills. A diploma in advanced welding is offered upon successful completion of the final semester of pipe welding.

The welding program offers an open entry option with a self-paced emphasis. All welding classes are offered at the Transportation Building, located on East Gordon Drive in Sioux City, near WITCC's main campus. If you have questions about any of the welding classes, please call Tom Rozmiarek at (712) 274-6400, ext. 1317, or email rozmiat@witcc.edu, or Greg Strong, ext. 1480; strongg@witcc.edu.

WEL-111 01	Welding Blueprint Reading TWTW	TBA		Prerequisite: MAT-772 3 cr	Rozmiarek
WEL-120 01	Oxy Fuel Welding and Cutting TBA	TBA		2 cr	Rozmiarek
WEL-161 01	Arc Welding I (SMAW) TWTW	TBA		6 cr	Rozmiarek
WEL-164 01	Arc Welding II (SMAW) TWTW	TBA		Prerequisite: WEL-161 4 cr	Rozmiarek
WEL-186 01	GMAW TWTW	TBA		4 cr	Rozmiarek
			CF \$91		
	20	MTW	6:00PM-9:35PM	4 cr	Staff
			CF \$91		
WEL-191 01	Gas Tungsten Arc Welding TWTW	TBA		Prerequisite: WEL-120 3 cr	Rozmiarek
			CF \$63		
WEL-208 01	Intro to Fabrication TWTW	TBA		2 cr	Rozmiarek
			CF \$126		
WEL-312 01	Pipe Welding/GTAW & SMAW TWTW	TBA		Prerequisite: WEL-164, WEL-191 7 cr	Rozmiarek
			CF \$112		
WEL-330 01	Welding Fundamentals TWTW	TBA		1 cr	Rozmiarek
			CF \$56		
WEL-331 01	Welding Fundamentals TWTW	TBA		2 cr	Rozmiarek
			CF \$56		
WEL-338 01	Welding Fundamentals TWTW	TBA		3 cr	Rozmiarek
			CF \$56		
WEL-700 01	Robotic Welding TWTW	TBA		Prerequisite: WEL-186 4 cr	Rozmiarek
			CF \$15		

Wind Energy Technician

The number of wind turbines in Iowa and in the United States continues to increase, as does the need for skilled workers who are able to install, maintain, service, and operate them. The Wind Energy Technician program encompasses the skill sets needed as a technician and/or operator, depending on the career path students choose.

Wind is the fastest growing energy source in the United States. In 2007, wind energy production increased by 21 percent, and a recent report by the U.S. Department of Energy suggests that it could contribute 20 percent of the nation's electricity by 2030. The American Solar Energy Society estimates that in 2006 there were 16,000 jobs in wind turbine construction and maintenance.

For more information, contact Greg Strong at (712) 274-6400, ext. 1480; strongg@witcc.edu.

WTT-201	Wind Turbine Site Construction and Location				
01	TBA	TBA	3 cr	Staff	
WTT-932	Wind Turbine Internship				
01	TBA	TBA	3 cr	Staff	

COLLEGE EXPERIENCE CLASS

SDV-108, The College Experience, is a one-credit, pass/fail course. This course introduces students to the college's expectations, environment, and resources so that students may become more competent participants in the learning process. The College Experience allows students opportunities to learn about WIT policies and procedures that will impact them. They also learn about acclimation to college, financial aid, campus security, self-advocacy, learning styles, study habits, student activities, and much more. It is highly recommended that a student enroll in The College Experience during his or her first semester of college. The College Experience, SDV-108, is a required course for all new, degree-seeking students. All students will benefit from SDV-108; however, students who fit into the following categories are not required to take the course:

1. Those students who have successfully passed a similar course at another institution.
2. Those students who transfer 12 or more credits with a minimum GPA of 2.0.
3. Those students who previously attended Western Iowa Tech and successfully completed 12 or more credits with a minimum GPA of 2.0. This does not include those students who completed college-level courses while enrolled in high school.
4. Students who plan on taking less than 12 credit hours at WITCC.

You've Got Email!

Once you're admitted to Western Iowa Tech, you are provided with a student email account. The college communicates important information regarding enrollment status, payment, financial aid, grades, and course information via your mywitcc.com email account.

To use your mywitcc account, follow these steps:

- ✓ Log onto witcc.edu or www.mywitcc.com
- ✓ Click on mywitcc.com
- ✓ Your mywitcc.com login name will match the name you used when you registered for classes. The login format is 'first name_last name', all lower case. Your mywitcc.com initial password will be your birthday, MMDDYY.

Evening College

Administrative Assistant – Evening

ADM-123	Document Formatting			Prerequisite: ADM-105
660 Hybrid	T	5:30PM-7:30PM	3 cr	Staff
ADM-159	Proofreading and Editing			
660 Hybrid	T	7:45PM-9:45PM	3 cr	Staff

Air Conditioning, Heating, and Refrig. – Evening

HCR-205	Air Conditioning Principles			Co-requisite: HCR-401
20	TTH CF \$50	6:00PM-9:30PM	3 cr	Staff

Art and Design – Evening

ART-101	Art Appreciation			
660 Hybrid	W	6:00PM-8:20PM	3 cr	Staff
ART-186	Digital Photography			
20	T	6:00PM-8:40PM	3 cr	Staff

Chemistry – Evening

CHM-132	Intro to Organic and Biochemistry			Prereq.: CHM-122 or CHM-166
660 Hybrid	MT CF \$25	6:00PM-8:30PM	4 cr	Romig

Heating and Refrigeration Training in the Evening

Heating and refrigeration systems consist of many mechanical, electrical, and electronic components, such as motors, compressors, pumps, fans, ducts, pipes, thermostats, and switches. This training will teach students the abilities to maintain, diagnose, and correct problems throughout the entire heating and refrigeration system.

HCR-205	Air Conditioning Principles	CF \$20	Prereq.: ELE-112
20	TTH	6:00PM-9:30PM	3 cr Staff

GET A+ CERTIFICATION TRAINING AT NIGHT IN ONE SEMESTER

Computer Hardware Basics:

NET-123-660 (Sioux City) NET-123-661 (Cherokee) NET-123-662 (Denison)

Operating Systems Software Basics:

NET-132-660 (Sioux City) NET-132-661 (Cherokee) NET-132-662 (Denison)

The classes meet from 6:00 to 8:40 p.m. Tuesday and Thursday evenings. By completing these courses students will be well prepared for the world of computer repair. Students also have the opportunity to take the CompTIA, A+ Hardware and Software National Certification exams at the end of the semester. The costs of the exams are included in the cost of the class. Get YOUR computer career started by becoming certified as a computer repair technician this semester.

Unique Plan of Study information begins on page 65.

Computers: General – Evening

CSC-110	Introduction to Computers				
20		TTH	6:00PM-8:20PM	3 cr	Staff

Construction - Evening

CON-136	Intro to Construction Shop				
20		Begins 6/2/2010 and ends 6/14/2010		1 cr	Staff
		MW	6:00PM-9:20PM		

CON-209	Introduction to Drywall			Prerequisite: CON-136	
20		Begins 6/16/2010 and ends 7/12/2010		1 cr	Staff
		MW	6:00PM-9:20PM		
		CF \$10			

CON-213	Advanced Drywall			Prerequisite: CON-136, CON-209	
20		Begins 7/14/2010 and ends 8/4/2010		1 cr	Staff
		MW	6:00PM-9:20PM		
		CF \$10			

Drafting – Evening

CAD-170	Intro to CAD: Pro Desktop			Prerequisite: DRF-113	
660 Hybrid		MW	6:00PM-9:25PM	2 cr	Staff
		CF \$20			

CAD-172	Intro to CAD: AutoCAD			Prerequisite: DRF-113 or INT-145	
660 Hybrid		MW	6:00PM-9:25PM	2 cr	Staff
		CF \$50			

CAD-174	Intro to CAD: Pro-Engineer			Prerequisite: DRF-113	
660 Hybrid		MW	6:00PM-9:25PM	2 cr	Staff
		\$20			

CAD-180	Intro to Solidworks			Prerequisite: DRF-113	
660 Hybrid		MW	6:00PM-9:25PM	2 cr	Staff
		CF \$20			

Career Resource Center

The Career Resource Center is located in Building A, Room 309 and offers a variety of job and career related activities including, workshops, career assessment, labor market information, resume/cover/letter/thank you letter writing and materials, job postings and job search resources and much more. The Career Resource Center is open to students, graduates, alumni and the public, with a specialist available for personal assistance from 8:00 a.m. to 4:30 p.m.

HOME REMODELING Drywall Certificate

With the knowledge obtained in the Drywall and Advanced Drywall courses, you will fasten drywall panels, tape, texture, and then prepare these panels for painting by taping and finishing joints and other imperfections.

The Intro to Construction Shop, Intro to Drywall, and Advanced Drywall courses run Monday and Wednesday evenings from 6-9 p.m. in Sioux City, Denison, and Cherokee.

CON-136	Introduction to Construction Shop				
20		Begins 6/1/10 and ends 6/14/10		1 cr	
		MW	6:00PM-9:20PM		

CON-209	Introduction to Drywall				
20		Begins 6/16/10 and ends 7/12/10		1 cr	
		MW	6:00PM-9:20PM		

CON-213	Advanced Drywall				
20		Begins 7/14/10 and ends 8/4/10		1 cr	
		MW	6:00PM-9:20PM		

Electrician – Evening

ELE-112	Basic Electrical Theory				
20	MW CF \$20	6:00PM-10:00PM	3 cr	Staff	
660 Hybrid	MW CF \$20	6:00PM-9:50PM	3 cr	Staff	

Electronics – Evening

ELT-680	Guitar & Amplifier Electronics				
20	Begins 6/1/2010 and ends 7/22/2010 TTH	6:00PM-7:50PM	3 cr	Staff	
ELT-690	Technology Integration I				
660 Hybrid	Begins 6/1/2010 and ends 7/1/2010 TTH CF \$15	6:00PM-9:40PM	3 cr	Staff	
ELT-691	Technology Integration II				Prerequisite: ELT-690
660 Hybrid	Begins 7/6/2010 and ends 8/5/2010 TTH CF \$15	6:00PM-9:40PM	3 cr	Staff	

Emergency Medical Services – Evening

EMS-110	EMS First Responder				
660 Hybrid	M CF \$75	6:00PM-10:00PM	2 cr	Staff	

English – Evening

ENG-010	Fundamentals of English				
20	MW	6:00PM-8:20PM	3 cr	Staff	
ENG-020	Fundamentals of Writing				
20	TTH	6:00PM-8:20PM	3 cr	Staff	
ENG-105	Composition I				
20	MW	6:00PM-8:20PM	3 cr	Staff	
ENG-106	Composition II				Prerequisite: ENG-105
20	TTH	6:00PM-8:20PM	3 cr	Staff	

GUITAR & AMPLIFIER ELECTRONICS

ELT-680	Guitar and Amplifier Electronics				
20	Begins 6/1/10 and ends 7/22/10 TTH	6:00PM-7:50PM	3 cr		

Receive Drafting and Computer-Aided Drafting (CAD) Training During the Evening

CAD-180	Intro to Solidworks				Prerequisite: DRF-113
660	MW CF \$20	6:00PM-9:25PM	2 cr		
CAD-172	Intro to CAD: AutoCAD				Prerequisite: DRF-113
660	MW CF \$50	6:00PM-9:25PM	2 cr		
CAD-174	Intro to CAD: Pro-Engineer				Prerequisite: DRF-113
660	MW CF \$20	6:00PM-9:25PM	2 cr		

Foreign Language – Evening

FLS-101	Spanish for Professionals: Health Care				
660 Hybrid	Begins 6/1/2010 and ends 6/29/2010	T	6:00PM-8:50PM	1 cr	Staff

Health Information Technology – Evening

HIT-245	Basic ICD-9-CM Coding		Prerequisite: HSC-114; Co-req.: MAP-123		
660 Hybrid	T	6:00PM-8:20PM		3 cr	Staff

Health Sciences – Evening

HSC-122	English/Spanish Medical Terminology				
20	MTH	6:00PM-8:50PM		3 cr	Staff

History – Evening

HIS-110	Western Civilization: Ancient to Early Modern				
20	TTH	6:00PM-8:20PM		3 cr	Staff

Industrial Plant Technology – Evening

BPT-114	Instrumentation I				
660 Hybrid	TTH	5:00PM-9:00PM		2 cr	Staff
BPT-115	Instrumentation II				
660 Hybrid	TTH	5:00PM-9:00PM		2 cr	Staff
EGT-142	Fluid Power I				
660 Hybrid	TTH	5:00PM-9:00PM		2 cr	Staff
EGT-143	Fluid Power II				
660 Hybrid	TTH	5:00PM-9:00PM		2 cr	Staff
ELT-102	Blueprint Reading				
660 Hybrid	TTH	5:00PM-9:00PM		2 cr	Staff
ELT-110	Electronics				
660 Hybrid	TTH	5:00PM-9:00PM		2 cr	Staff
ELT-118	Programmable Controllers				
660 Hybrid	TTH	5:00PM-9:00PM		2 cr	Staff
ELT-150	Basic Electrical Theory				
660 Hybrid	TTH	5:00PM-9:00PM		2 cr	Staff
ELT-208	Motor Control				
660 Hybrid	TTH	5:00PM-9:00PM		2 cr	Staff
ELT-740	Industrial Safety Electrical Systems				
660 Hybrid	TTH	5:00PM-9:00PM		1 cr	Staff
ELT-780	Electromechanical Control Systems				
660 Hybrid	TTH	5:00PM-9:00PM		2 cr	Staff
IND-111	Industrial Safety Mechanical Systems				
660 Hybrid	TTH	5:00PM-9:00PM		1 cr	Staff
IND-141	Power Transmission				
660 Hybrid	TTH	5:00PM-9:00PM		2 cr	Staff
IND-180	Industrial Heating & Cooling				
660 Hybrid	TTH	5:00PM-9:00PM		2 cr	Staff
MFG-520	Predictive Maintenance				
660 Hybrid	TTH	5:00PM-9:00PM		2 cr	Staff

DEVELOPMENTAL EDUCATION EVENING COURSES

ENG-010	Fundamentals of English				
30	MW	6:00PM-8:20PM		3 cr	
ENG-020	Fundamentals of Writing				
30	MW	6:00PM-8:20PM		3 cr	
MAT-041	Basic Math				
31	MW	6:00PM-8:20PM		3 cr	

Literature - Evening

LIT-931 01	Integrated Experiential Learning: Shakespeare & Co TBA	6:00PM-10:00PM	3 cr	Staff
----------------------	--	----------------	------	-------

Mathematics - Evening

MAT-041 20	Basic Math MW	6:00PM-8:20PM	3 cr	Staff
MAT-063 20	Elementary Algebra TTH	6:00PM-9:00PM	4 cr	Staff Prerequisite: MAT-041
MAT-102 20	Intermediate Algebra TTH	6:00PM-9:00PM	4 cr	Staff Prerequisite: MAT-063
MAT-121 20	College Algebra TTH	6:00PM-9:00PM	4 cr	Staff Prerequisite: MAT-102
MAT-772 20 ICN	Applied Math MW	6:00PM-8:20PM	3 cr	Staff Prerequisite: MAT-041

Manufacturing – Evening

See also Industrial Plant Technology

Network Administration and Security – Evening

NET-123 660 Hybrid	Computer Hardware Basics Begins 6/1/10 and ends 6/30/10 MW CF \$15	6:00PM-9:40PM	4 cr	Price
NET-132 660 Hybrid	Operating Systems Software Basics Begins 7/7/10 and ends 8/6/10 MW CF \$333	6:00PM-9:40PM	3 cr	Price
NET-155 20	Intro to Wireless Networks TTH CF \$15	6:00PM-9:40PM	3 cr	Price Prerequisite: NET-132, NET-123

Physical Education – Evening

PEA-148 20	Physical Fitness I T CF \$10	6:00PM-8:40PM	2 cr	Staff
----------------------	---	---------------	------	-------

Psychology – Evening

PSY-111 20 ICN	Introduction to Psychology MW	6:00PM-8:20PM	3 cr	Staff
--------------------------	---	---------------	------	-------

Evening/Online HR Technician

The HR Technician Certificate is appropriate for those with some experience in the human resources field to expand their knowledge base. Students may continue their education with the Human Resources Diploma and Human Resources Management Associate of Applied Science Degree. The program courses are offered in the evening and online so that students may graduate in two semesters. Students may also spread the courses out over a longer period of time.

Evening/Online Schedule

Fall

ADM-105-660	Introduction to Keyboarding (hybrid)	1 cr
CSC-110-660	Introduction to Computers (hybrid)	3 cr
BCA-221-660	Integrated Computer Business Applications (hybrid)	3 cr
MGT-174-540	Training and Employee Development (online)	3 cr
MGT-177-540	Staffing (online)	3 cr

Spring

PSY-102	Human and Work Relations (hybrid)	3 cr
MGT-170	Human Resource Management (hybrid)	3 cr
MGT-178	Employment Law (online)	3 cr
MGT-200	Managing Diversity (online)	3 cr

Reading – Evening

RDG-038 20	College Prep Reading I MW	6:00PM-8:20PM	3 cr	Staff
RDG-039 20	College Prep Reading II MW	6:00PM-8:20PM	3 cr	Staff

Speech – Evening

SPC-112 20	Public Speaking TTH	6:00PM-8:20PM	3 cr	Staff
SPC-122 20	Interpersonal Communication MW	6:00PM-8:20PM	3 cr	Staff

Student Development – Evening

SDV-949 20	Exploring Career Options Begins 7/6/2010 and ends 8/3/2010 T	5:30PM-8:30PM	1 cr	Staff
----------------------	---	---------------	------	-------

Welding - Evening

WEL-186 20	GMAW MTW CF \$91	6:00PM-9:35PM	4 cr	Staff
----------------------	-------------------------------	---------------	------	-------

Electrical Maintenance Technician

These courses prepare Electrical Technicians to operate, troubleshoot and maintain electrical systems, motor controls, and PLC systems. All of these courses are available every semester, and also available for multiple entry points throughout each semester.

Students can start these courses during the summer semester and finish the certificate in either the following Fall and Spring Semesters. For questions about these courses please contact Greg Strong 712-274-8733 Ext. 1480, or email strongg@witcc.edu.

ELT-740-660	Industrial Systems Electrical Systems
ELT-150-660	Basic Electrical Theory
ELT-110-660	Electronics
ELT-208-660	Motor Controls
ELT-780-660	Electromechanical Control Systems
ELT-118-660	Programmable Logic Controllers
BPT-114-660	Instrumentation I
BPT-115-660	Instrumentation II

(Lab available 5:00PM to 9:00PM TTH)

– Diploma Option also available. –

Mechanical Maintenance Technician

These courses prepare Mechanical Technicians in the maintenance and troubleshooting of common mechanical systems used in the industry. All of these courses are available every semester, and also available for multiple entry points throughout each semester.

Students can start these courses during the summer semester and finish the certificate in either the following fall or spring semesters. For questions about these courses please contact Greg Strong 712-274-8733 Ext. 1480, or email strongg@witcc.edu.

IND-111-660	Industrial Safety Mechanical Systems
ELT-102-660	Blueprint Reading
EGT-142-660	Fluid Power I
EGT-143-660	Fluid Power II
IND-141-660	Power Transmission
IND-180-660	Industrial Heating and Cooling
MFG-520-660	Predictive Maintenance

(Lab available 5:00PM to 9:00PM TTH)

– Diploma Option also available. –

Sioux City Interim

May 20 to May 27, 2010

ART-101 02	Art Appreciation MTWTHFS	8:00AM-3:00PM	3 cr	Staff
HIS-151 02	U.S. History to 1877 MTWTHFS	8:00AM-3:00PM	3 cr	Staff
MUS-100 01	Music Appreciation MTWTHFS	8:00AM-3:00PM	3 cr	Staff
PNN-833 01 ICN	Supervision and Management Concepts in Health Care MTWTHFS CF \$20	8:00AM-3:00PM	3 cr	Staff
PSY-111 04	Introduction to Psychology MTWTHFS	8:00AM-3:00PM	3 cr	Staff
SOC-110 03	Introduction to Sociology MTWTHFS	8:00AM-3:00PM	3 cr	Staff
SPC-112 01	Public Speaking MTWTHFS	8:00AM-3:00PM	3 cr	Staff
SPC-112 06	Public Speaking MTWTHFS	8:00AM-3:00PM	3 cr	Staff

Sioux City Summer 1st Half

June 1 to July 2, 2010, unless otherwise noted.

ACC-309 01	Computer Accounting MTWTH	1:00PM-2:55PM	1 cr	Prerequisite: ACC-131 Staff
ADM-105 660 Hybrid	Introduction to Keyboarding MTWTH	8:00AM-8:50AM	1 cr	Staff
ADM-131 660 Hybrid	Office Calculators MTWTH	8:00AM-8:50AM	1 cr	Staff
ART-133 01	Drawing MTWTH CF \$25	9:15AM-11:35AM	3 cr	Staff
ART-134 01	Drawing II MTWTH CF \$25	9:15AM-11:35AM	3 cr	Prerequisite: ART-133 Staff
BCA-165 01	Basic Databases MTWTH	1:00PM-2:25PM	2 cr	Staff
BUS-102 01	Introduction to Business MTWTH	8:00AM-10:20AM	3 cr	Staff
BUS-185 01	Business Law I MTWTH	10:30AM-12:50PM	3 cr	Staff
CAD-170 01	Intro to CAD: Pro Desktop MTWTH CF \$20	10:00AM-1:45PM	2 cr	Prerequisite: DRF-113 Helzer

Supplemental Instruction

The Student Success Center coordinates supplemental instruction sessions for select courses each semester. These sessions take place outside of class time and offer students an opportunity to review important material in a group setting with a qualified supplemental instruction leader (student who has previously mastered the course material). Students who participate in the free supplemental instruction sessions have historically outperformed other students in the class.

Sioux City Summer – 1st Half (con't.)

COM-723 02	Workplace Communications MTWTH	8:00AM-10:20AM	3 cr	Staff
ECN-120 01	Principles of Macroeconomics MTWTH	10:30AM-12:50PM	3 cr	Staff
ELT-690 660 Hybrid	Technology Integration I TTH CF \$15	6:00PM-9:40PM	3 cr	Staff
ENG-105 03	Composition I MTWTH	1:00PM-3:20PM	3 cr	Staff
FLS-141 01	Elementary Spanish I MTWTH	1:00PM-4:00PM	4 cr	Staff
HIS-110 660 Hybrid ICN	Western Civilization: Ancient to Early Modern TTH	10:30AM-12:50PM	3 cr	Staff
HIS-151 01	U.S. History to 1877 MTWTH	9:15AM-11:35AM	3 cr	Staff
HSC-148 01	Medication Aide TTH	3:00PM-6:50PM	3 cr	Staff
HSC-174 01	Nurse Aide Clinical Begins 6/23/2010 and ends 7/1/2010 M ^W TH CF \$165	8:00AM-2:30PM	1 cr	Co-requisite: HSC-173 Staff
MAT-041 04	Basic Math MTWTH	10:30AM-12:50PM	3 cr	Staff
MAT-063 03	Elementary Algebra MTWTH	10:30AM-11:55AM	4 cr	Prerequisite: MAT-041 Staff
MAT-121 03	College Algebra MTWTH	1:00PM-4:00PM	4 cr	Prerequisite: MAT-102 Staff
MAT-157 02	Statistics MTWTH	7:45AM-10:45AM	4 cr	Prerequisite: MAT-121, MAT-110 or MAT-141 Staff
MAT-772 01	Applied Math MTWTH	10:30AM-12:50PM	3 cr	Prerequisite: MAT-041 Staff
PEA-117 01	Bowling I MWF CF \$85	2:00PM-3:50PM	1 cr	Staff
PHI-105 01	Introduction to Ethics MTWTH	10:30AM-12:50PM	3 cr	Staff
POL-112 01	American State and Local Government MTWTH	10:30AM-12:50PM	3 cr	Staff
PTA-423 01	Clinical Affiliation III and Seminar CF \$40	8:00AM-5:00PM	3 cr	Prerequisite: PTA-422 Staff
PSY-102 01	Human & Work Relations MTWTH	8:00AM-10:20AM	3 cr	Staff
PSY-111 01	Introduction to Psychology MTWTH	8:00AM-10:20AM	3 cr	Staff
		10:30AM-12:50PM	3 cr	Staff

Developmental Classes – Late Start

“Late Start” courses enable any student who may register for classes after the start of the regular semester to begin their developmental requirements in English and math without missing those crucial first few days of class.

BCA-051 02	Fundamentals of Computer Operations Begins 7/6/09 and ends 8/6/09 MTWTH	10:30AM-12:50PM	2 cr
----------------------	--	-----------------	------

Sioux City Summer – 1st Half (con't.)

PSY-121 01	Developmental Psychology MTWTH	10:30AM-12:50PM	Prerequisite: PSY-111 3 cr	Staff
RDG-038 01	College Prep Reading I MTWTH	8:00AM-10:20AM	3 cr	Staff
RDG-039 01	College Prep Reading II MTWTH	10:30AM-12:50PM	3 cr	Staff
SOC-110 01	Introduction to Sociology MTWTH	8:00AM-10:20AM	3 cr	Staff
SOC-120 01	Marriage and Family MTWTH	10:30AM-12:50PM	3 cr	Staff
SDV-114 01	Strategies for Academic Success MTWTH	8:00AM-10:20AM	3 cr	Staff
SDV-153 01	Pre-Employment Strategies MTWTH	9:15AM-10:55AM	2 cr	Staff
SPC-112 02	Public Speaking MTWTH	10:30AM-12:50PM	3 cr	Staff
04	MTWTH	1:00PM-3:20PM	3 cr	Staff

PLATO Online Learning Program

The PLATO online learning program is a self-paced learning tool that helps improve skills in reading, sentence skills, science, and math. The program is useful for both current and prospective students wishing to enhance their academic skills or raise CPT scores. Student Success Center staff will create a login for interested students and provide instructions for accessing the program. WITCC students can access this program free of charge.

To find out more about Student Success Center services, contact Tawnya Beermann, Student Success Center Director, at (712) 274-6400, ext. 1491.

Non-credit English as a Second Language (ESL)

Non-credit English as a Second Language (ESL) classes are free, offered in the daytime and evenings, and are from beginning basic to advanced (Pre-GED) levels.

Just follow these 3 easy steps:

1. Call WITCC at (712) 274-6400 or 800-352-4649 and ask for Pamela Woolridge or Chris Case.
2. Schedule a placement test with Pamela or Chris.
3. Meet with an advisor after the test to find out when your class starts.

**Contact Chris Case at 274-6400, extension 1285 or
Pamela Woolridge at extension 1854.**

Sioux City Summer 2nd Half

July 6 to August 6, 2010, unless otherwise noted.

ART-949 01	Business of Art	MTWTH	10:00AM-11:30AM	2 cr	Staff
BCA-051 01	Fundamentals of Computer Operations	MWTH T	10:30AM-12:50PM 10:30AM-11:05AM	2 cr	Staff
BCA-115 01	Internet Basics	MTWTH	9:00AM-10:25AM	1 cr	Staff
BIO-070 03 ICN	Basic Biological Concepts	MW	1:00PM-4:00PM	2 cr	O'Neill
BUS-186 01	Business Law II	MTWTH	10:30AM-12:50PM	3 cr	Prerequisite: BUS-185 Staff
COM-723 01	Workplace Communications	MTWTH	8:00AM-10:20AM	3 cr	Staff
COM-753 01	Technical Communications	MTWTH	8:00AM-10:20AM	3 cr	Staff
CON-213 20	Advanced Drywall	Begins 7/14/2010 and ends 8/4/2010 MW CF \$10	6:00PM-9:20PM	1 cr	Prerequisite: CON-136, CON-209 Staff
CSC-110 05	Introduction to Computers	MTWTH	8:00AM-10:20AM	3 cr	Staff
DRF-170 01	Machine Design Drafting	MTWTH MTWTH	10:00AM-11:50AM 12:30PM-2:30PM	3 cr	Prerequisite: MFG-206 Helzer
ECN-130 01	Principles of Microeconomics	MTWTH	10:30AM-12:50PM	3 cr	Staff
ELT-691 660 Hybrid	Technology Integration II	TTH	6:00PM-9:40PM	3 cr	Prerequisite: ELT-690 Staff CF \$15
ENG-105 02	Composition I	MTWTH	8:00AM-10:20AM	3 cr	Staff
664 Hybrid	Composition I	MW	9:15AM-10:25AM	3 cr	Staff
ENG-106 03	Composition II	MTWTH	1:00PM-3:20PM	3 cr	Prerequisite: ENG-105 Staff
HIS-111 660 Hybrid ICN	Western Civilization: Early Modern to Present	TTH	10:30AM-12:50PM	3 cr	Staff
HIS-152 01	U.S. History Since 1877	MTWTH	9:15AM-11:35AM	3 cr	Staff
LIT-101 02	Introduction to Literature	MTWTH	1:00PM-3:20PM	3 cr	Prerequisite: ENG-105 Staff
MAT-772 03	Applied Math	MTWTH	10:30AM-12:50PM	3 cr	Prerequisite: MAT-041 Staff

Need a Tutor?

Contact the Learning Achievement Center



Don't waste your time . . .
order books online

<http://bookstore.witcc.edu>

Sioux City Summer – 2nd Half (con't.)

MGT-101 01	Principles of Management MTWTH	8:00AM-10:20AM	3 cr	Staff
NET-132 660 Hybrid	Operating Systems Software Basics CF \$333	6:00PM-9:40PM	3 cr	Price
PHI-101 01	Introduction to Philosophy MTWTH	10:30AM-12:50PM	3 cr	Staff
PSY-102 02	Human & Work Relations MTWTH	8:00AM-10:20AM	3 cr	Staff
PSY-111 03	Introduction to Psychology MTWTH	10:30AM-12:50PM	3 cr	Staff
PSY-241 01	Abnormal Psychology MTWTH	10:30AM-12:50PM	3 cr	Prerequisite: PSY-111 Staff
RDG-038 02	College Prep Reading I MTWTH	1:00PM-3:20PM	3 cr	Staff
RDG-039 02	College Prep Reading II MTWTH	8:00AM-10:20AM	3 cr	Staff
SDV-114 02	Strategies for Academic Success MTWTH	8:00AM-10:20AM	3 cr	Staff
SDV-153 02	Pre-Employment Strategies MTWTH	9:15AM-10:55AM	2 cr	Staff
SOC-110 02	Introduction to Sociology MTWTH	10:30AM-12:50PM	3 cr	Staff
SPC-112 03	Public Speaking MTWTH	10:30AM-12:50PM	3 cr	Staff
05	MTWTH	1:00PM-3:20PM	3 cr	Staff

EDGE

Evening Degree – General Education

The Accelerated Evening Degree General Education Program (EDGE) offers students the opportunity to complete a General Studies Associate of Arts degree in just over two years during the **evening**. Unique scheduling pairs two classes back to back for eight weeks. A second set of classes during the next eight or nine weeks follows for a total of four classes in a semester meeting the full time student criteria for financial aid. Lab sciences courses are taught during the summer to accommodate the time needed to complete the labs. The EDGE courses begin a new cycle of rotation every fall semester. For more information, call the Admissions Office at 712-274-6403 or 800-352-4649. See page 69.

Student Email Accounts

Remember to check your student mywitcc.com email account often. Throughout the semester, we will communicate important information to you via this account.

Unique Plan of Study information begins on page 65.

Cherokee Day & Evening

June 1 to August 6, 2010, unless otherwise noted.

BIO-070	Basic Biological Concepts				
40 ICN	TTH	10:30AM-12:00PM	2 cr	Jorstad	
41 ICN	Begins 7/6/2010 and ends 8/6/2010 MW	1:00PM-4:00PM	2 cr	O'Neill	
BIO-151	Nutrition			Prerequisite: BIO-070	
40 ICN	MW	10:30AM-12:30PM	3 cr	Jorstad	
BIO-186	Microbiology			Prerequisite: BIO-116 or BIO-169	
40 ICN	MWF CF \$25	8:00AM-10:00AM	4 cr	O'Neill	
CON-136	Intro to Construction Shop				
40	Begins 6/2/2010 and ends 6/14/2010		1 cr	Staff	
CON-209	Introduction to Drywall			Prerequisite: CON-136	
40	Begins 6/16/2010 and ends 7/12/2010 MW CF \$10	6:00PM-9:20PM	1 cr	Staff	
CON-213	Advanced Drywall			Prerequisite: CON-136, CON-209	
40	Begins 7/14/2010 and ends 8/4/2010 MW CF \$10	6:00PM-9:20PM	1 cr	Staff	
CSC-110	Introduction to Computers				
40	Begins 6/1/2010 and ends 7/1/2010 MTWTH	8:00AM-10:20AM	3 cr	Staff	
ELT-102	Blueprint Reading				
661 Hybrid	TTH	5:00PM-9:00PM	2 cr	Staff	
ELT-150	Basic Electrical Theory				
661 Hybrid	TTH	5:00PM-9:00PM	2 cr	Staff	
ENG-010	Fundamentals of English				
40	MW	8:00AM-10:20AM	3 cr	Staff	
ENG-020	Fundamentals of Writing				
40	MW	8:00AM-10:20AM	3 cr	Staff	
ENG-105	Composition I				
40 ICN	MW	8:00AM-10:20AM	3 cr	Staff	
ENG-106	Composition II			Prerequisite: ENG-105	
40 ICN	TTH	8:00AM-10:20AM	3 cr	Staff	
HIS-110	Western Civilization: Ancient to Early Modern				
661 Hybrid ICN	Begins 6/1/2010 and ends 7/1/2010 TTH	10:30AM-12:50PM	3 cr	Staff	
HIS-111	Western Civilization: Early Modern to Present				
661 ICN	Begins 7/6/2010 and ends 8/5/2010 TTH	10:30AM-12:50PM	3 cr	Staff	

You've Got Email!

Once you're admitted to Western Iowa Tech, you are provided with a student email account. The college communicates important information regarding enrollment status, payment, financial aid, grades, and course information via your mywitcc.com email account.

To use your mywitcc account, follow these steps:

- ✓ Log onto witcc.edu or www.mywitcc.com
- ✓ Click on mywitcc.com
- ✓ Your mywitcc.com login name will match the name you used when you registered for classes. The login format is 'first name_last name', all lower case. Your mywitcc.com initial password will be your birthday, MMDDYY.

Cherokee Day & Evening (con't.)

MAT-041	Basic Math				
40 ICN	MW	10:30AM-12:50PM	3 cr	Staff	
MAT-063	Elementary Algebra			Prerequisite: MAT-041	
40 ICN	MW	12:30PM-3:30PM	4 cr	Staff	
MAT-102	Intermediate Algebra			Prerequisite: MAT-063	
40 ICN	TTH	12:30PM-3:30PM	4 cr	Staff	
MAT-121	College Algebra			Prerequisite: MAT-102	
40 ICN	TTH	6:00PM-8:50PM	4 cr	Staff	
MAT-772	Applied Math			Prerequisite: MAT-041	
40 ICN	MW	6:00PM-8:20PM	3 cr	Staff	
MUS-100	Music Appreciation				
40 ICN	TTH	8:00AM-10:20AM	3 cr	Staff	
PNN-833	Supervision and Management Concepts In Health Care				
40 ICN	Begins 5/20/2010 and ends 5/28/2010 MTWTHF CF \$20	8:00AM-2:30PM	3 cr	Staff	
PSY-111	Introduction to Psychology				
40 ICN	MW	6:00PM-8:20PM	3 cr	Staff	
PSY-121	Developmental Psychology			Prerequisite: PSY-111	
40 ICN	TTH	1:00PM-3:20PM	3 cr	Staff	
RDG-038	College Prep Reading I				
40	MW	8:00AM-10:20AM	3 cr	Staff	
RDG-039	College Prep Reading II				
40	MW	8:00AM-10:20AM	3 cr	Staff	

STUDENT SERVICES AVAILABLE IN CHEROKEE

- Academic Advising
- Adult Basic Education/GED
- CPT Prep and Testing
- Career Counseling
- Computer Lab
- Disability Accommodations
- ESL Software and Assistance
- Interactive Career Software
- Skill Development Software
- Library Services
- Personal Counseling
- Transfer Information
- Tutoring

Evening Construction Courses at the Cherokee Campus

CON-136	Introduction to Construction Shop			
40	Begins 6/2/10 and ends 6/14/10 MW	6:00PM-9:20PM	1 cr	
CON-209	Introduction to Drywall			Prerequisite: CON-136
40	Begins 6/16/10 and ends 7/12/10 MW	6:00PM-9:20PM	1 cr	
CON-213	Advanced Drywall			Prerequisite: CON-136, CON-209
40	Begins 7/14/10 and ends 8/4/10 MW	6:00PM-9:20PM	1 cr	

Denison Day & Evening

June 1 to August 6, 2010, unless otherwise noted.

ART-101 30	Art Appreciation MTWTH	9:15AM-10:20AM	3 cr	Staff
BIO-070 30 ICN	Basic Biological Concepts TTH	10:30AM-12:00PM	2 cr	Jorstad
31 ICN	Begins 7/6/2010 and ends 8/6/2010 MW	1:00PM-4:00PM	2 cr	O'Neill
BIO-151 30 ICN	Nutrition MW	10:30AM-12:30PM	3 cr	Jorstad
BIO-186 30 ICN	Microbiology MWF CF \$25	8:00AM-10:00AM	4 cr	O'Neill
CON-136 30	Intro to Construction Shop Begins 6/2/2010 and ends 6/14/2010		1 cr	Staff
CON-209 30	Introduction to Drywall Begins 6/16/2010 and ends 7/12/2010 MW CF \$10	6:00PM-9:20PM	1 cr	Staff
CON-213 30	Advanced Drywall Begins 7/14/2010 and ends 8/4/2010 MW CF \$10	6:00PM-9:20PM	1 cr	Staff
CSC-110 30	Introduction to Computers TTH	6:00PM-8:20PM	3 cr	Staff
ELT-102 662 Hybrid	Blueprint Reading TTH	5:00PM-9:00PM	2 cr	Staff
ELT-150 662 Hybrid	Basic Electrical Theory TTH	5:00PM-9:00PM	2 cr	Staff
ENG-010 30	Fundamentals of English MW	6:00PM-8:20PM	3 cr	Staff
ENG-020 30	Fundamentals of Writing MW	6:00PM-8:20PM	3 cr	Staff
ENG-105 30 ICN	Composition I MW	8:00AM-10:20AM	3 cr	Staff
ENG-106 30 ICN	Composition II TTH	8:00AM-10:20AM	3 cr	Staff
ENV-111 662E Hybrid	Environmental Science T	5:30PM-9:45AM	4 cr	O'Neill
HIS-110 662 Hybrid ICN	Western Civilization: Ancient to Early Modern Begins 6/1/10 and ends 7/1/10 TTH	10:30AM-12:50PM	3 cr	Staff
HIS-111 662 Hybrid ICN	Western Civilization: Early Modern to Present Begins 7/6/2010 and ends 8/6/2010 TTH	10:30AM-12:50PM	3 cr	Staff
MAT-041 30 ICN	Basic Math MW	10:30AM-12:50PM	3 cr	Staff
31	TTH	1:00PM-3:20PM	3 cr	Staff
MAT-063 30 ICN	Elementary Algebra MW	12:30PM-3:30PM	4 cr	Staff
MAT-102 30 ICN	Intermediate Algebra TTH	12:30PM-3:30PM	4 cr	Staff
MAT-121 30 ICN	College Algebra TTH	6:00PM-8:50PM	4 cr	Staff

Denison Day & Evening (con't.)

MAT-772 30 ICN	Applied Math MW	6:00PM-8:20PM	Prerequisite: MAT-041 3 cr	Staff
MUS-100 30	Music Appreciation TTH	8:00AM-10:20AM	3 cr	Staff
PNN-833 30 ICN	Supervision and Management Concepts In Health Care Begins 5/20/2010 and ends 5/27/2010 MTWTHFS CF \$20	8:00AM-3:00PM	3 cr	Staff
PSY-102 30	Human & Work Relations Begins 6/1/2010 and ends 7/2/2010 MTWTH	1:00PM-3:20PM	3 cr	Staff
PSY-111 30 ICN	Introduction to Psychology MW	6:00PM-8:20PM	3 cr	Staff
PSY-121 30 ICN	Developmental Psychology TTH	1:00PM-3:20PM	Prerequisite: PSY-111 3 cr	Staff
RDG-038 30	College Prep Reading I MW	4:30PM-5:50PM	3 cr	Staff
RDG-039 30	College Prep Reading II MW	4:30PM-5:50PM	3 cr	Staff
SDV-114 30	Strategies for Academic Success Begins 7/6/2010 and ends 8/6/2010 MTWTH	1:00PM-3:20PM	3 cr	Staff
SPC-112 30	Public Speaking Begins 6/1/2010 and ends 7/1/2010 MTWTH	10:30AM-12:50PM	3 cr	Staff
SPC-122 30	Interpersonal Communication Begins 6/1/2010 and ends 7/1/2010 MTWTH	1:00PM-3:20PM	3 cr	Staff

STUDENT SERVICES AVAILABLE IN DENISON

- Academic Advising
- Adult Basic Education/GED
- CPT Prep and Testing
- Career Counseling
- Computer Lab
- Disability Accommodations
- ESL Software and Assistance
- Family Literacy Program
- Interactive Career Software
- Skill Development Software
- Library Services
- Personal Counseling
- Transfer Information
- Tutoring
- LEXIA Reading Developmental Software

Evening Construction Courses at the Denison Campus

CON-136 30	Introduction to Construction Shop Begins 6/2/2010 and ends 6/14/2010 MW	6:00PM-9:20PM	1 cr	
CON-209 30	Introduction to Drywall Begins 6/6/2010 and ends 7/12/2010 MW	6:00PM-9:20PM	Prerequisite: CON-136 1 cr	
CON-213 30	Advanced Drywall Begins 7/14/2010 and ends 8/4/2010 MW	6:00PM-9:20PM	Prerequisite: CON-136, CON-209 1 cr	

Le Mars Day & Evening

June 1 to August 6, 2010, unless otherwise noted.

BIO-070	Basic Biological Concepts				
60 ICN	TTH	10:30AM-12:00PM	2 cr	Jorstad	
61 ICN	Begins 7/6/2010 and ends 8/6/2010 MW	1:00PM-4:00PM	2 cr	O'Neill	
BIO-151	Nutrition			Prerequisite: BIO-070	
60 ICN	MW	10:30AM-12:30PM	3 cr	Jorstad	
BIO-186	Microbiology			Prerequisite: BIO-116 or BIO-169	
60 ICN	MWF CF \$25	8:00AM-10:00AM	4 cr	O'Neill	
CSC-110	Introduction to Computers				
60	TTH	6:00PM-8:20PM	3 cr	Staff	
ENG-105	Composition I				
60 ICN	MW	8:00AM-10:20AM	3 cr	Staff	
ENG-106	Composition II			Prerequisite: ENG-105	
60 ICN	TTH	8:00AM-10:20AM	3 cr	Staff	
HIS-110	Western Civilization: Ancient to Early Modern				
663 Hybrid ICN	Begins 6/1/2010 and ends 7/1/2010 TTH	10:30AM-12:50PM	3 cr	Staff	
HIS-111	Western Civilization: Early Modern to Present				
663 Hybrid ICN	Begins 7/6/2010 and ends 8/5/2010 TTH	10:30AM-12:50PM	3 cr	Staff	
MAT-041	Basic Math				
60 ICN	MW	10:30AM-12:50PM	3 cr	Staff	
MAT-063	Elementary Algebra			Prerequisite: MAT-041	
60 ICN	MW	12:30PM-3:30PM	4 cr	Staff	
MAT-102	Intermediate Algebra			Prerequisite: MAT-063	
60 ICN	TTH	12:30PM-3:30PM	4 cr	Staff	
MAT-121	College Algebra			Prerequisite: MAT-102	
60 ICN	TTH	6:00PM-8:50PM	4 cr	Staff	
MAT-772	Applied Math			Prerequisite: MAT-041	
60 ICN	MW	6:00PM-8:20PM	3 cr	Staff	
MUS-100	Music Appreciation				
60 ICN	TTH	8:00AM-10:20AM	3 cr	Staff	
PSY-111	Introduction to Psychology				
60 ICN	MW	6:00PM-8:20PM	3 cr	Staff	
PSY-121	Developmental Psychology			Prerequisite: PSY-111	
60 ICN	TTH	1:00PM-3:20PM	3 cr	Staff	

PLATO Online Learning Program

The PLATO online learning program is a self-paced learning tool that helps improve skills in reading, sentence skills, science, and math. The program is useful for both current and prospective students wishing to enhance their academic skills or raise CPT scores. Student Success Center staff will create a login for interested students and provide instructions for accessing the program. WITCC students can access this program free of charge.

To find out more about Student Success Center services, contact Tawnya Beermann, Student Success Center Director, at (712) 274-6400, ext. 1491.

Unique Plan of Study information begins on page 64.

Cherokee Hybrid

ELT-102	Blueprint Reading				
661 Hybrid	TTH	5:00PM-9:00PM	2 cr	Staff	
ELT-150	Basic Electrical Theory				
661 Hybrid	TTH	5:00PM-9:00PM	2 cr	Staff	
HIS-110	Western Civilization: Ancient to Early Modern				
661 Hybrid	Begins 6/1/2010 and ends 7/1/2010		3 cr	Staff	
ICN	TTH	10:30AM-12:50PM			
HIS-111	Western Civilization: Early Modern to Present				
661 Hybrid	Begins 7/6/2010 and ends 8/5/2010		3 cr	Staff	
ICN	TTH	10:30AM-12:50PM			

Denison Hybrid

ELT-102	Blueprint Reading				
662 Hybrid	TTH	5:00PM-9:00PM	2 cr	Staff	
ELT-150	Basic Electrical Theory				
662 Hybrid	TTH	5:00PM-9:00PM	2 cr	Staff	
HIS-110	Western Civilization: Ancient to Early Modern				
662 Hybrid	Begins 6/1/2010 and ends 7/1/2010		3 cr	Staff	
ICN	TTH	10:30AM-12:50PM			
HIS-111	Western Civilization: Early Modern to Present				
662 Hybrid	Begins 7/6/2010 and ends 8/5/2010		3 cr	Staff	
ICN	TTH	10:30AM-12:50PM			

Le Mars Hybrid

HIS-110	Western Civilization: Ancient to Early Modern				
663 Hybrid	Begins 6/1/2010 and ends 7/1/2010		3 cr	Staff	
ICN	TTH	10:30AM-12:50PM			
HIS-111	Western Civilization: Early Modern to Present				
663 Hybrid	Begins 7/6/2010 and ends 8/5/2010		3 cr	Staff	
ICN	TTH	10:30AM-12:50PM			

You've Got Email!

Once you're admitted to Western Iowa Tech, you are provided with a student email account. The college communicates important information regarding enrollment status, payment, financial aid, grades, and course information via your mywitcc.com email account.

To use your mywitcc account, follow these steps:

- ✓ Log onto witcc.edu or www.mywitcc.com
- ✓ Click on mywitcc.com
- ✓ Your mywitcc.com login name will match the name you used when you registered for classes. The login format is 'first name_last name', all lower case. Your mywitcc.com initial password will be your birthday, MMDDYY.

Supplemental Instruction

The Student Success Center coordinates supplemental instruction sessions for select courses each semester. These sessions take place outside of class time and offer students an opportunity to review important material in a group setting with a qualified supplemental instruction leader (student who has previously mastered the course material). Students who participate in the free supplemental instruction sessions have historically outperformed other students in the class.

Sioux City Hybrid

ADM-105	Introduction to Keyboarding				
660 Hybrid	Begins 6/1/2010 and ends 7/2/2010 MTWTH	8:00AM-8:50AM	1 cr	Staff	
ADM-123	Document Formatting				Prerequisite: ADM-105
660 Hybrid	T	5:30PM-7:30PM	3 cr	Staff	
ADM-131	Office Calculators				
660 Hybrid	Begins 6/1/2010 and ends 7/2/2010 MTWTH	8:00AM-8:50AM	1 cr	Staff	
ADM-159	Proofreading and Editing				
660 Hybrid	T	7:45PM-9:45PM	3 cr	Staff	
ART-101	Art Appreciation				
660 Hybrid	W	6:00PM-8:20PM	3 cr	Staff	
BPT-114	Instrumentation I				
660 Hybrid	TTH	5:00PM-9:00PM	2 cr	Staff	
BPT-115	Instrumentation II				
660 Hybrid	TTH	5:00PM-9:00PM	2 cr	Staff	
CAD-170	Intro to CAD: Pro Desktop				Prerequisite: DRF-113
660 Hybrid	MW CF \$20	6:00PM-9:25PM	2 cr	Staff	
CAD-172	Intro to CAD: AutoCAD				Prerequisite: DRF-113 or INT-145
660 Hybrid	MW CF \$50	6:00PM-9:25PM	2 cr	Staff	
CAD-174	Intro to CAD: Pro-Engineer				Prerequisite: DRF-113
660 Hybrid	MW CF \$20	6:00PM-9:25PM	2 cr	Staff	
CAD-180	Intro to Solidworks				Prerequisite: DRF-113
660 Hybrid	MW CF \$20	6:00PM-9:25PM	2 cr	Staff	
CHM-132	Intro to Organic and Biochemistry				Prerequisite: CHM-122 or CHM-166
660 Hybrid	MT CF \$25	6:00PM-8:30PM	4 cr	Romig	
EGT-142	Fluid Power I				
660 Hybrid	TTH	5:00PM-9:00PM	2 cr	Staff	
EGT-143	Fluid Power II				
660 Hybrid	TTH	5:00PM-9:00PM	2 cr	Staff	
ELE-112	Basic Electrical Theory				
660 Hybrid	MW CF \$20	6:00PM-9:50PM	3 cr	Staff	
ELT-102	Blueprint Reading				
660 Hybrid	TTH	5:00PM-9:00PM	2 cr	Staff	

COLLEGE EXPERIENCE CLASS

SDV-108, The College Experience, is a one-credit, pass/fail course. This course introduces students to the college's expectations, environment, and resources so that students may become more competent participants in the learning process. The College Experience allows students opportunities to learn about WIT policies and procedures that will impact them. They also learn about acclimation to college, financial aid, campus security, self-advocacy, learning styles, study habits, student activities, and much more. It is highly recommended that a student enroll in The College Experience during his or her first semester of college. The College Experience, SDV-108, is a required course for all new, degree-seeking students. All students will benefit from SDV-108; however, students who fit into the following categories are not required to take the course:

1. Those students who have successfully passed a similar course at another institution.
2. Those students who transfer 12 or more credits with a minimum GPA of 2.0.
3. Those students who previously attended Western Iowa Tech and successfully completed 12 or more credits with a minimum GPA of 2.0. This does not include those students who completed college-level courses while enrolled in high school.
4. Students who plan on taking less than 12 credit hours at WITCC.

Sioux City Hybrid (con't.)

ELT-110	Electronics				
660 Hybrid	TTH	5:00PM-9:00PM	2 cr	Staff	
ELT-118	Programmable Controllers				
660 Hybrid	TTH	5:00PM-9:00PM	2 cr	Staff	
ELT-150	Basic Electrical Theory				
660 Hybrid	TTH	5:00PM-9:00PM	2 cr	Staff	
ELT-208	Motor Control				
660 Hybrid	TTH	5:00PM-9:00PM	2 cr	Staff	
ELT-690	Technology Integration I				
660 Hybrid	Begins 6/1/2010 and ends 7/1/2010 TTH CF \$15	6:00PM-9:40PM	3 cr	Staff	
ELT-691	Technology Integration II				Prerequisite: ELT-690
660 Hybrid	Begins 7/6/2010 and ends 8/5/2010 TTH CF \$15	6:00PM-9:40PM	3 cr	Staff	
ELT-740	Industrial Safety Electrical Systems				
660 Hybrid	TTH	5:00PM-9:00PM	1 cr	Staff	
ELT-780	Electromechanical Control Systems				
660 Hybrid	TTH	5:00PM-9:00PM	2 cr	Staff	
EMS-110	EMS First Responder				
660 Hybrid	M CF \$75	6:00PM-10:00PM	2 cr	Staff	
ENG-105	Composition I				
664 Hybrid	Begins 7/7/2010 and ends 8/4/2010 MW	9:15AM-10:25AM	3 cr	Staff	
FLS-101	Spanish for Professionals: Health Care				
660 Hybrid	Begins 6/1/2010 and ends 6/29/2010 T	6:00PM-8:50PM	1 cr	Staff	
HIS-110	Western Civilization: Ancient to Early Modern				
660 Hybrid ICN	Begins 6/1/2010 and ends 7/1/2010 TTH	10:30AM-12:50PM	3 cr	Staff	
HIS-111	Western Civilization: Early Modern to Present				
660 Hybrid	Begins 7/6/2010 and ends 8/5/2010 TTH	10:30AM-12:50PM	3 cr	Staff	
HIT-245	Basic ICD-9-CM Coding				Prerequisite: HSC-114; Co-req.: MAP-123
660 Hybrid	T	6:00PM-8:20PM	3 cr	Staff	
HSC-173	Nurse Aide Theory				Co-requisite: HSC-174
660 Hybrid	Begins 6/1/2010 and ends 7/16/2010 CF \$30		3 cr	Staff	
HSC-255	Physical Assessment of Adults				
660 Hybrid	TBA CF \$20	TBA	3 cr	Staff	
IND-111	Industrial Safety Mechanical Systems				
660 Hybrid	TTH	5:00PM-9:00PM	1 cr	Staff	
IND-141	Power Transmission				
660 Hybrid	TTH	5:00PM-9:00PM	2 cr	Staff	
IND-180	Industrial Heating & Cooling				
660 Hybrid	TTH	5:00PM-9:00PM	2 cr	Staff	
MFG-520	Predictive Maintenance				
660 Hybrid	TTH	5:00PM-9:00PM	2 cr	Staff	
NET-123	Computer Hardware Basics				
660 Hybrid	Begins 6/1/2010 and ends 6/30/2010 CF \$15	6:00PM-9:40PM	4 cr	Price	
NET-132	Operating Systems Software Basics				
660 Hybrid	Begins 7/7/2010 and ends 8/4/2010 CF \$333	6:00PM-9:40PM	3 cr	Price	

Online Courses

NOTE: Online courses begin June 1 and end July 26, 2010.

Online courses are \$142.00 per credit hour.

Orientation: Please see the next page for dates and times.

All online courses will be taught entirely online. HYBRID courses will be a combination of face-to-face and online instruction. These courses are delivered via the **eCollege.com system**, a leader in online learning. eCollege offers such features as: audio, video, testing, gradebook, and collaborative work environments, including threaded discussion groups, real-time chat rooms, PowerPoint presentations, document sharing, and webliographics.

Is Online/Hybrid Learning for You?

Q. Do you have the necessary self-discipline and motivation?

A. Yes . . . if you make it a priority. Although the courses have more flexibility and freedom, it is up to you to keep pace with the classes and complete assignments.

Q. Do you have time management skills that will allow you to schedule specific times to work on your online course?

A. Yes . . . if you understand that online courses require as much, if not more, time as traditional courses. It is important that you set aside extra time to meet the requirements of the course.

Q. Do you feel comfortable expressing yourself in writing?

A. Yes . . . if you are capable of putting your thoughts into grammatically correct, written statements and/or essays. Typing skills are very valuable in an online course.

Q. Will you miss face-to-face interaction and the traditional classroom in an online course?

A. Not at all . . . if you acclimate yourself to interacting online. Essentially, you'll be working in a "virtual environment" much like using e-mail, discussion groups, and chat rooms.

Q. What is a "hybrid" online course?

A. A "hybrid" online course combines face-to-face classroom or lab instruction with online learning. In a hybrid course, a significant part of the course learning is online and, as a result, the amount of classroom seat time is reduced. You will attend meetings on campus during the dates and times listed in this schedule of classes.

Q. What computer skills are necessary for online/hybrid courses?

A. All you need are the basic skills such as word processing, downloading software, using a Web browser, etc.

Q. What are the technical requirements for online/hybrid courses?

A. Of course you must have access to a computer and an Internet connection. The chart below gives you a quick summary of the minimum computer system features required to take the web courses.

Minimum Computer System Requirements

PC	MAC
Windows 2000, XP, or Vista	MacOS X or higher (in classic mode)
64 MB RAM	32 MB RAM (64 recommended)
28.8 kbps modem (56K recommended)	28.8 kbps modem (56K recommended)
Soundcard & Speakers	Soundcard & Speakers
Recommended Version: (Win. Internet Explorer)	Recommended Version: (Safari)
<ul style="list-style-type: none"> • Microsoft Internet Explorer 7.0 	<ul style="list-style-type: none"> • Safari 3.0
Recommended Version: (Mozilla Firefox)	Recommended Version: (Mozilla Firefox)
<ul style="list-style-type: none"> • Mozilla Firefox 3.0 	<ul style="list-style-type: none"> • Mozilla Firefox 3.0
Supported Versions: (Windows Internet Explorer)	Supported Versions: (Safari)
<ul style="list-style-type: none"> • Microsoft Internet Explorer 6.0 or 8.0 	<ul style="list-style-type: none"> • Safari 2.0 or 4.0
Supported Versions: (Mozilla Firefox)	Supported Versions: (Mozilla Firefox)
<ul style="list-style-type: none"> • Mozilla Firefox 2.0 or 3.5 	<ul style="list-style-type: none"> • Mozilla Firefox 2.0 or 3.5

Important Note: A complete list of technical requirements is found at <http://www.iowaonline.com/index.learn?action=Technical>

Different courses may have different requirements. We strongly recommend that you check this website prior to registering so you are certain you have what you need for a given course.

Online Courses

Note: Online courses begin June 1 and end July 26, 2010.

Online courses are \$142 per credit hour.

Orientation to Online Learning

New online students are urged to attend a free 1-hour training session at the beginning of the summer 2010 online term called "Orientation to Online Learning."

Registration is required. Call 1-800-352-4649 and sign up for one of the following sessions:

SDV-949-01	Orientation to Online Learning	June 1, 2010	Sioux City	Room A448	5:30-6:30 p.m.
SDV-949-30	Orientation to Online Learning	June 2, 2010	Denison	Room A10	5:30-6:30 p.m.
SDV-949-40	Orientation to Online Learning	June 2, 2010	Cherokee	Room 101	5:30-6:30 p.m.
SDV-949-02	Orientation to Online Learning	June 3, 2010	Sioux City	Room A448	2:00-3:00 p.m.

ACC-111	Intro to Accounting				
	540 Online			3 cr	Staff
ACC-131	Principles of Accounting I				
	540 Online			4 cr	ICCOC
	640 Online			4 cr	Staff
ACC-132	Principles of Accounting II				
	540 Online			Prerequisite: ACC-131 4 cr	ICCOC
ACC-161	Payroll Accounting				
	540 Online			Prerequisite: ACC-131 3 cr	ICCOC
ACC-222	Cost Accounting				
	540 Online			Prerequisite: ACC-132 4 cr	Staff
AGA-376	Integrated Pest Management				
	540 Online			3 cr	ICCOC
AGC-936	Occupational Experience				
	540 Online			Prerequisite: AGC-420, AGB-437 3 cr	ICCOC
AGS-331	Animal Reproduction				
	540 Online			3 cr	Staff
ANT-105	Cultural Anthropology				
	540 Online			3 cr	ICCOC
ART-101	Art Appreciation				
	540 Online			3 cr	ICCOC
ART-203	Art History I				
	540 Online			3 cr	ICCOC
ART-204	Art History II				
	540 Online			3 cr	Staff
BCA-147	Basic Spreadsheets				
	540 Online			2 cr	Staff
BCA-949	Special Topics				
	640 Online			2 cr	Staff
BIO-070	Basic Biological Concepts				
	540 Online			2 cr	Romig
BIO-105	Introductory Biology				
	540 Online			4 cr	ICCOC
BIO-151	Nutrition				
	640 Online			Prerequisite: BIO-070 3 cr	Jorstad

Online Courses (con't.)

BIO-169	Human Anatomy and Physiology IA w/Lab	Prerequisite: BIO-070
540 Online		4 cr ICCOC
BIO-174	Human Anatomy & Physiology IIA w/Lab	Prerequisite: BIO-169
540 Online		4 cr ICCOC
BUS-102	Introduction to Business	
540 Online		3 cr ICCOC
BUS-124	Business Innovations	
540 Online		3 cr Staff
BUS-130	Intro to Entrepreneurship	
540 Online		3 cr ICCOC
BUS-185	Business Law I	
540 Online		3 cr ICCOC
BUS-186	Business Law II	Prerequisite: BUS-185
540 Online		3 cr ICCOC
CIS-171	Java	
540 Online		3 cr Bingen
CIS-606	Visual Basic.NET I	
540 Online		3 cr Bingen
CRJ-100	Introduction to Criminal Justice	
540 Online		3 cr ICCOC
CRJ-101	Ethics in Criminal Justice	
540 Online		3 cr Staff
CRJ-110	Patrol Procedures	
540 Online		3 cr ICCOC
CRJ-120	Intro to Corrections	
540 Online		3 cr ICCOC
CRJ-133	Constitutional Criminal Procedure	
540 Online		3 cr ICCOC
CSC-110	Introduction to Computers	
540 Online		3 cr ICCOC
640 Online		3 cr Staff
DEA-830	RDA Nitrous Oxide Monitoring	
640 Online		1 cr Staff
DRA-101	Introduction to Theatre	
540 Online		3 cr ICCOC
ECE-103	Intro to Early Childhood Education	
540 Online		3 cr Staff
ECE-133	Child Health, Safety and Nutrition	
540 Online		3 cr Staff
ECE-170	Child Growth and Development	
540 Online		3 cr Staff
ECE-221	Infant/Toddler Care and Education	
540 Online		3 cr Staff
ECE-243	Early Childhood Guidance	
540 Online		3 cr Staff
ECE-287	Exceptional Learner	
540 Online		3 cr Staff

The complete WITCC course catalog is online at
<http://www.witcc.com/pdf/catalog.pdf>

Online Courses (con't.)

ECN-120	Principles of Macroeconomics		
540 Online		3 cr	ICCOC
ECN-130	Principles of Microeconomics		
540 Online		3 cr	ICCOC
EDU-120	Communication, Ethics & Confidentiality		
540 Online		2 cr	Staff
EDU-121	Behavior Improvement		
540 Online		2 cr	Staff
EDU-122	Roles and Responsibilities		
540 Online		2 cr	Staff
EDU-210	Foundations of Education		
540 Online		3 cr	Staff
EDU-240	Educational Psychology		
540 Online		3 cr	ICCOC
ENG-105	Composition I		
540 Online		3 cr	ICCOC
640 Online		3 cr	Staff
ENG-106	Composition II	Prerequisite: ENG-105	
540 Online		3 cr	ICCOC
ENG-150	Fundamentals of English Grammar		
540 Online		3 cr	Staff
ENV-111	Environmental Science		
540 Online		4 cr	ICCOC
FIN-101	Principles of Banking		
540 Online		3 cr	ICCOC
FIN-121	Personal Finance		
540 Online		3 cr	Staff
FIN-130	Principles of Finance	Prerequisite: ACC-132	
540 Online		3 cr	ICCOC

Child Development Associate (CDA)

Western Iowa Tech will be offering the following classes for the early childhood teacher/provider who is working toward a CDA (Child Development Associate). A CDA is a nationally recognized credential for early childhood personnel who show achievement of a series of competencies. It is administered by the CDA National Credentialing Program in Washington, DC. (Completing these courses does not give the student a CDA; these courses are the educational component of the CDA.)

Classes for CDA:

ECE-103-540 Online Intro to Early Childhood Education

ECE-243-540 Online Early Childhood Guidance

ECE-133-540 Online Child Health, Safety, and Nutrition

Choose one of the following three classes:

ECE-158 Early Childhood Curriculum I (for preschool age teachers)

ECE-159 Early Childhood Curriculum II (for preschool age teachers)

ECE-221-540 Infant/Toddler Care and Education (for infant/toddler teachers)

Online Courses (con't.)

GEO-121	World Regional Geography		
540 Online		3 cr	ICCOC
HIS-110	Western Civilization: Ancient to Early Modern		
540 Online		3 cr	Staff
HIS-111	Western Civilization: Early Modern to Present		
540 Online		3 cr	Staff
HIS-151	U.S. History to 1877		
540 Online		3 cr	ICCOC
HIS-152	U.S. History Since 1877		
540 Online		3 cr	ICCOC
HIS-211	Modern Asian History		
540 Online		3 cr	Staff
HIS-251	U.S. History 1945 to Present		
540 Online		3 cr	ICCOC
HIS-268	U.S. at War: Vietnam War, American Experience in Vietnam		
540 Online		3 cr	Staff
HSC-105	Intro to Health Occupations	Co-requisite: HSC-245, BCA-115	
540 Online		1 cr	Staff
HSC-109	Health Careers & Teams		
540 Online		3 cr	Staff
HSC-111	Issues in Health and Society		
540 Online		3 cr	Staff
HSC-114	Medical Terminology		
540 Online		3 cr	ICCOC
640 Online		3 cr	Staff
HSC-123	Transcultural Concepts in Health/Illness		
540 Online		1 cr	Staff
HSC-138	Clinical Calculations in Healthcare		
540 Online		2 cr	Staff
HSC-143	Pharmacology		
540 Online		3 cr	Staff
HSC-155	Basic ECG Interpretation		
540 Online		2 cr	Staff
HSC-218	Clinical Pathology for Allied Health	Prerequisite: HSC-114, BIO-169 or BIO-163	
540 Online		3 cr	Staff
HSC-245	Team Building		
540 Online		1 cr	Staff
LIT-101	Introduction to Literature	Prerequisite: ENG-105	
540 Online		3 cr	Staff
LIT-105	Children's Literature		
540 Online		3 cr	ICCOC
LIT-110	American Literature to Mid-1800s	Prerequisite: ENG-105, LIT-101	
540 Online		3 cr	Staff
LIT-111	American Literature since Mid-1800's	Prerequisite: ENG-105, LIT-101	
540 Online		3 cr	ICCOC
LIT-124	American Poetry	Prerequisite: ENG-105 or LIT-101	
540 Online		3 cr	Staff
LIT-150	World Literature I	Prerequisite: ENG-105, LIT-101	
540 Online		3 cr	ICCOC

Online Courses (con't.)

LIT-161	The Short Story	Prerequisite: ENG-105 or LIT-101
540 Online		3 cr ICCOC
LIT-189	Women and Literature	Prerequisite: ENG-105
540 Online		3 cr Staff
MAP-402	Medical Law and Ethics	
540 Online		2 cr Staff
MAT-063	Elementary Algebra	Prerequisite: MAT-041
540 Online		4 cr Staff
MAT-102	Intermediate Algebra	Prerequisite: MAT-063
540 Online		4 cr Staff
MAT-110	Math for Liberal Arts	Prerequisite: MAT-102
540 Online		3 cr ICCOC
MAT-117	Math for Elementary Teachers	Prerequisite: MAT-102
540 Online		3 cr ICCOC
MAT-121	College Algebra	Prerequisite: MAT-102
540 Online		4 cr Staff
MAT-156	Statistics	Prerequisite: MAT-121, MAT-110 or MAT-141
540 Online		3 cr ICCOC
MAT-201	Applied Calculus	Prerequisite: MAT-121
540 Online		5 cr Staff
MAT-772	Applied Math	Prerequisite: MAT-041
540 Online		3 cr Staff
MGT-101	Principles of Management	
540 Online		3 cr ICCOC
MGT-130	Principles of Supervision	
540 Online		3 cr ICCOC
MGT-170	Human Resource Management	
540 Online		3 cr Staff
MGT-178	Employment Law	
540 Online		3 cr ICCOC
MKT-110	Principles of Marketing	
540 Online		3 cr ICCOC
MKT-140	Principles of Selling	
540 Online		3 cr ICCOC
MKT-150	Principles of Advertising	
540 Online		3 cr ICCOC

PLATO Online Learning Program

The PLATO online learning program is a self-paced learning tool that helps improve skills in reading, sentence skills, science, and math. The program is useful for both current and prospective students wishing to enhance their academic skills or raise CPT scores. Student Success Center staff will create a login for interested students and provide instructions for accessing the program. WITCC students can access this program free of charge.

To find out more about Student Success Center services, contact Tawnya Beermann, Student Success Center Director, at (712) 274-6400, ext. 1491.

Online Courses (con't.)

MUS-100	Music Appreciation			
540 Online		3 cr	ICCOC	
MUS-205	Jazz History and Appreciation			
540 Online		3 cr	ICCOC	
PEC-110	Coaching Ethics, Techniques and Theory			
640 online	Begins 6/12/2010 and ends 6/22/2010	1 cr	Staff	
PEC-115	Athletic Development and Human Growth			
640 Online	Begins 6/1/2010 and ends 6/11/2010	1 cr	Staff	
PEC-120	Body Structure and Function			
640 Online	Begins 6/23/2010 and ends 7/3/2010	1 cr	Staff	
PEC-126	Athletic Injury Prevention			
640 Online	Begins 7/6/2010 and ends 7/26/2010	2 cr	Staff	
PHI-101	Introduction to Philosophy			
540 Online		3 cr	ICCOC	
PHI-105	Introduction to Ethics			
540 Online		3 cr	ICCOC	
PHI-111	Basic Reasoning			
540 Online		3 cr	Staff	
PHS-120	Exploring Physical Science			
540 Online		4 cr	Staff	
PHS-151	Introduction to Astronomy			
540 Online		3 cr	ICCOC	
POL-111	American National Government			
540 Online		3 cr	ICCOC	
POL-112	American State and Local Government			
540 Online		3 cr	ICCOC	
POL-201	The U.S. Constitution			
540 Online		3 cr	ICCOC	
PSY-102	Human & Work Relations			
540 Online		3 cr	ICCOC	
PSY-111	Introduction to Psychology			
540 Online		3 cr	ICCOC	
PSY-121	Developmental Psychology			
540 Online		Prerequisite: PSY-111 3 cr	ICCOC	
PSY-211	Psychology of Adjustment			
540 Online		Prerequisite: PSY-111 3 cr	ICCOC	
PSY-222	Child Psychology			
540 Online		Prerequisite: PSY-111 3 cr	Staff	
PSY-224	Adolescent Psychology			
540 Online		Prerequisite: PSY-111 3 cr	Staff	
PSY-241	Abnormal Psychology			
540 Online		Prerequisite: PSY-111 3 cr	ICCOC	
PSY-251	Social Psychology			
540 Online		Prerequisite: PSY-111 3 cr	ICCOC	
PSY-261	Human Sexuality			
540 Online		Prerequisite: PSY-111 3 cr	ICCOC	
REL-101	Survey of World Religions			
540 Online		3 cr	ICCOC	
REL-150	Introduction to the Bible			
540 Online		3 cr	Staff	

Online Courses (con't.)

SDV-153	Pre-Employment Strategies		
540 Online		2 cr	ICCOC
SOC-110	Introduction to Sociology		
540 Online		3 cr	ICCOC
640 Online		3 cr	Staff
SOC-115	Social Problems	Prerequisite: SOC-110	
540 Online		3 cr	ICCOC
SOC-120	Marriage and Family		
540 Online		3cr	Staff
SOC-160	Introduction to Social Work		
540 Online		3 cr	ICCOC
SOC-200	Minority Group Relations		
540 Online		3 cr	ICCOC
SOC-210	Men, Women and Society		
540 Online		3 cr	Staff
SOC-220	Sociology of Aging		
540 Online		3 cr	Staff
SPC-112	Public Speaking		
540 Online		3 cr	ICCOC
SPC-122	Interpersonal Communication		
540 Online		3 cr	ICCOC

Unique Plan of Study information begins on page 65.

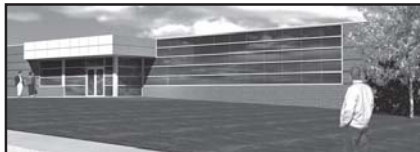
Community Based Job Training Opportunity Grant Through the Department of Labor: **THE SECURITY INSTITUTE**

The Department of Labor has provided career accounts for students seeking a degree, diploma or certificate in the homeland security field.

These funds will provide up to \$3000/year toward tuition and fees.

The programs eligible for this limited funding include:

- Fire Science
- Police Science Technology, Corrections and Forensics
- Emergency & Disaster Management
- Emergency Medical Services- Paramedic
- Cyber Crime Investigation
- Computer Forensics Specialist
- Network Administration & Security
- LAN Technician



Contact: Steve Ebsen, Security Institute Director: ebsens@witcc.edu or (712) 274-8733, ext. 1232

Recruitment Specialist: Andrea Albrecht, andrea_albrecht@witcc.edu or (712) 274-8733, ext. 3230

Western Iowa Tech Community College (WITCC) is excited to introduce **The National Boiler Training and Renewable Fuels Institute**. This institute can provide low cost comprehensive, high-skilled training for individuals who desire a career as a boiler operator, boiler maintenance technician or as an operator or lab technician in the ethanol or biodiesel industries. Listed below is a sample of our program offerings:

- Boiler Technology
- Boiler Plant Operation & Maintenance
- Biodiesel Basics
- Corn Based Ethanol Process
- Lab Tech
- Front Line/First Time Manager Training
- Workplace Safety
- Workplace Communication



Tuition Assistance: Individuals, who qualify, can establish a "Career Account" through the Institute. A Career Account provides funds through a DOL grant and can cover the cost of tuition and fees up to \$3,000 per participant.

Check us out at: <http://boiler.witcc.edu>

Contact: Rick Moon, Project Coordinator, (712) 274-8733, ext.3220, richard_moon@witcc.edu,

or Recruitment Specialist, Amber Kilburn, (712) 274-8733, ext 1242, amber_kilburn@witcc.edu.



Associate of Arts General Studies Degree Requirements

- Graduation requirement:
64 semester credits

Western Iowa Tech Community College

I. GENERAL ED CORE

A. English and Speech (9)

ENG 105 ___
 ENG 106 ___
 SPC 112 ___

Total _____

B. Mathematics & Lab Sciences (9)

(1 math course and 1 lab science course)

MAT 110, 117, 121, 129, 130,
 141, 150, 157, 201, 211 ___

BIO 105, 116, 125, 151 (no lab),
 163, 169, 197 ___

CHM 122, 166 ___

ENV 111 ___

PHY 162, 212 ___

PHS 120, 151, 170 (no lab) ___

Total _____

C. Social Sciences & Behavioral Sciences (9)

(3 courses—at least 1 course from ea. section)

SECTION 1: History & Diverse Cultures

ANT 105 ___

GEO 121 ___

HIS 110, 111, 151, 152, 211 ___

SOC 200, 210 ___

SECTION 2: Social & Political Sciences

ECN 120, 130 ___

POL 111, 112, 121, 125, 151, 211 ___

PSY 111, 121 ___

SOC 110, 120 ___

Total _____

D. Humanities (9)

(3 courses from at least 2 disciplines)

ART 101, 203, 204 ___

DRA 101, 112 ___

ENG 221 ___

FLF 141, 142 ___

FLG 141, 142, 231, 232 ___

FLS 141, 142, 231, 232 ___

HUM 101, 220 ___

MUS 100 ___

LIT 101, 124, 133, 185, 189 ___

MMS 101 ___

PHI 101, 105, 111 ___

REL 101 ___

SPC 122, 140 ___

Total _____

E. Computers & Technology (3)

CSC 110 ___

Total _____

F. Distribution Requirement (4)

(Four additional credits from B, C, or D)

Total _____

II. OPTIONAL AREA OF CONCENTRATION Cr. Varies

Suggested Minimum: 9 cr.

Total _____

III. ELECTIVES Cr. Varies

Total _____

**GRAND TOTAL
(64 credits Minimum)** _____



Associate of Science General Studies Degree Requirements

• Graduation requirement:
64 semester credits

Western Iowa Tech Community College

I. GENERAL ED CORE

A. English and Speech (9)

ENG 105
ENG 106
SPC 112

Total _____

B. Mathematics & Lab Sciences (6)

(1 math course and 1 lab science course)

MAT 110, 121, 129, 130,
141, 150, 157, 201, 211
BIO 105, 116, 125, 151 (no lab),
163, 169, 197
CHM 122, 166
ENV 111
PHY 162, 212
PHS 120, 151

Total _____

C. Social Sciences &

Behavioral Sciences (6)

(3 courses—at least 1 course from ea. section)

SECTION 1: History & Diverse Cultures

ANT 105
GEO 121
HIS 110, 111, 151, 152, 211
SOC 200, 210

SECTION 2: Social & Political Sciences

ECN 120, 130
POL 111, 112, 121, 125, 151, 211
PSY 111, 121
SOC 110, 120

Total _____

D. Humanities (6)

(3 courses from at least 2 disciplines)

ART 101, 203, 204
DRA 101, 112
ENG 221
FLF 141, 142
FLG 141, 142, 231, 232
FLS 141, 142, 231, 232
HUM 101, 220
LIT 101, 124, 133, 185, 189
MMS 101
MUS 100, 202

PHI 101, 105, 111

REL 101

SPC 122, 140

Total _____

E. Computers & Technology (3)

CSC 110

Total _____

F. Distribution Requirement (4)

(Four additional credits from B, C, or D)

Total _____

II. MATHEMATICS AND

SCIENCE

14 Cr.

See advisor for minimum requirements.

Total _____

III. ELECTIVES

Cr. Varies

Total _____

GRAND TOTAL

(64 credits Minimum) _____

Dev. 3/09/jb/pr

Math and Science Clusters First Year Course Sequence Recommendations

Audience: Arts and Sciences Transfer Math, Sciences and Health Sciences majors

Format: Math and Science course recommendations

Notes: Students interested in a math, science, or health science area of study need to plan their program of study to take advantage of the major's sequenced courses offered in the mathematics and science departments. Plan to start the mathematics and sciences courses the first semester you enroll. Consult the department chair or faculty for more specific advice. If you know the college you intend to transfer to, it is also beneficial to consult them early with your plan of study.

Advisors: Confirm your course selection with a faculty advisor in your area of study, especially health science majors.

Biology and Chemistry Majors

Recommended Fall Courses

MAT 121 College Algebra
BIO 116 General Biology IB
CHM 166 General Chemistry I

Recommended Spring Courses

MAT 157 Statistics
BIO 117 General Biology IIB
CHM 176 General Chemistry II

Anatomy & Physiology and Biology Majors

Recommended Fall Courses

BIO 116 General Biology IB
BIO 169 Human Anatomy and
Physiology IA w/Lab

Recommended Spring Courses

BIO 117 General Biology IIB
BIO 174 Human Anatomy &
Physiology IIA w/Lab

Mathematics, Chemistry, and Physics Majors

Recommended Fall Courses

CHM 166 General Chemistry I
MAT 211 Calculus I
PHY 212 Classical Physics I

Recommended Spring Courses

CHM 176 General Chemistry II
MAT 217 Calculus II
PHY 222 Classical Physics II

Recommended Summer Class

MAT 219 Calculus III

Health Science Majors

Recommended Fall Courses

CHM 122 Intro to General Chemistry
BIO 169 Human Anatomy and
Physiology IA w/Lab

Recommended Spring Courses

CHM 132 Intro to Organic and
Biochemistry
BIO 174 Human Anatomy &
Physiology IIA w/Lab

PLAN FOR SUMMER & FALL!

Earn These Certificates in One Semester

- Auto Drive Train
- Automotive Electrical
- Automotive Painting
- Auto Body Procedures

- Child Care Development Assistant: 9 hours. On page 74 in catalog.

- Entrepreneurship

- EMT-B*
- First Responder*

** The above EMS courses are at a certificate level, but they require successful completion of the state/national test for certification.*

- Paraeducator Teacher Aide Certificate Program

Nursing and Allied Health certificates:

- Nursing Assistant (prepares graduate upon certification for position in long term care facility)
- Home Care Aide (expands functions of nursing assistant into home care setting)
- Rehabilitative/Restorative Aide (expands functions of nursing assistant to provide rehabilitation activities)
- IV Therapy Concepts and Review (expands functions of Iowa employed practical nurses to perform procedures for intravenous therapy)
- Supervision and Management in Health Care
- Medication Aide (expands functions of nursing assistant to administer nonparenteral medications)
- RDA Expanded Functions I (allows specific expanded functions for Dental Assistants)
- RDA Expanded Functions II (allows specific expanded functions for Dental Assistants)
- RDA Nitrous Oxide Monitoring (expanded functions for nitrous oxide monitoring in dentistry)
- Limited Dental Radiography (meets eligibility requirements for radiography qualification for working dental assistants)

EDGE

Evening Degree – General Education

- Audience:** Arts and Sciences Evening Students–General Studies Associate of Arts degree
- Format:** Tuesday night or Thursday night, accelerated hybrid
- Advisor:** Admissions, or **Belia Padilla**, ext. 1807 or padillb@witcc.edu
Theresa M. Jackson, ext 1428, Humanities Instructor

EDGE Arts & Sciences evening schedule of classes offers students the opportunity to complete a General Studies Associate of Arts degree in just over two years during the evening. The Area of Concentration/Elective courses fulfill beginning requirements for a variety of majors such as education, sociology, psychology, criminal justice and others. Students may multi-task between education, work, and family commitments as they complete the following plan of study. All credits transfer to a baccalaureate degree and the Associate of Arts degree with a minimum cumulative GPA of 2.0 will allow students to enroll at junior level status in the college of liberal arts or other participating colleges at any Iowa Regents University. EDGE hybrid courses blend online technology with face-to-face teaching. The unique scheduling pairs two classes back to back from 5:15 p.m. to 10:00 p.m. for eight weeks. A second set of classes during the next eight or nine weeks follows for a total of four classes in a semester meeting the full time student criteria for financial aid. Lab science courses are taught during the summer to accommodate the time needs to complete the labs.

EDGE courses will begin a new cycle of rotation every fall semester.

Fall

CSC-110	Introduction to Computers	3
ENG-105	Composition I	3
SPC-112	Public Speaking	3
ENG-106	Composition II	3

Spring

SOC-110	Introduction to Sociology	3
HIS-152	U.S. History since 1877	3
SPC-122	Interpersonal Communication	3
SOC-200	Minority Group Relations	3

Summer

ENV-111	Environmental Science	4
---------	-----------------------------	---

Fall

PHI-105	Introduction to Ethics	3
ART-101	Art Appreciation	3
REL-101	Survey of World Religions	3
PSY-111	Introduction to Psychology	3

Spring

PSY-121	Developmental Psychology	3
GEO-121	World Regional Geography	3
ECN-130	Principles of Macroeconomics	3
POL-111	American National Government	3

Summer

BIO-105	Introductory Biology	4
---------	----------------------------	---

Fall

MAT-121	College Algebra	4
MAT-157	Statistics	4

Index

General Information

Add, Drop, Withdraw	5
Calendar for Spring Semester	3
Campus Locations	6
CPT Test	4
E-mail Instructions	8
Enrollment Information	4-5
Enrollment Tips	5
FACTS Tuition Payment Plan Schedule	6
Financial Aid Policies	7
Guarantee	9
How to Read the Schedule	9
Important Things to Know	5-7
Map of Sioux City Campus	8
Methods of Payment	6
Refund Policies	5
Registration Checklist	4
Telephone Information	3
Textbooks	4
Tuition Charges	6
Unique Plan of Study	65-69
WITCC Website Information	9

Programs

1st Half	43-45	CAD Training, Evening	39
2nd Half	46-47	Career Resource Center	19
A+ Certification	37	Certificates Earned in One Semester	68
Accounting	11	Chemistry	16, 37
Administrative Assistant	11, 37	Cherokee Day & Evening Classes	48-49, 53
Agriculture	12	Child Development Associate (CDA)	59
Air Conditioning, Heating and Refrigeration	12, 37	Coaching/Officiating	16
Anthropology	12	College Experience Class	36
Architectural Construction Engineering Technology	13	Communications	16
Art and Design	13, 37	Computer Applications	17
Associate of Arts General Studies Degree Requirements	65	Computers: General	17, 38
Associate of Science General Studies Degree Requirements	66	Construction	17, 38
Automotive Technology	14	Denison Day & Evening Classes	50-51, 53
Biological Sciences	14	Dental Assisting	18
Boiler Training & Renewable Fuels Institute ..	64	Developmental Classes (Late Start)	44
Business	15	Developmental Education Evening Classes ...	40
Business Innovation	16	Drafting	18, 38, 39
		Drama and Theater	18
		Drywall Certificate	38

Index

Early Childhood Education	18	Math & Science Clusters Sequence	67
Economics	19	Mathematics	27, 41
EDGE Program	69	Mechanical Engineering Technology	29
Education (Paraeducator/Teacher Aide)	19	Medical Assistant	29
Electrician	19, 39	Music	29
Electronics	20, 39	Network Administration & Security	29, 41
Emergency Medical Services	21, 39	New Programs	10
English as a Second Language	21	Nursing	30
English	21, 39	Nursing Assistant, Certified	24
Environmental Science	22	Online Courses	56-63
Evening Courses, Sioux City	37-42	Personal Trainer, Certified	23
Finance	22	Pharmacy Technician	31
Foreign Language	22, 40	Philosophy	30
Geography	22	Physical Education	30, 41
Graphic Design	22	Physical Science	30
Guitar & Amplifier Electronics	20	Physical Therapist Assistant	31
Health Information Technology	22, 40	PLATO Online Learning Program	32
Health Sciences	23, 40	Police Science	31
History	25, 40	Political Science	31
HR Technician	41	Psychology	31, 41
Hybrid Courses	53-55	Reading	32, 42
Industrial Plant Technology	25, 40	Religion	32
Information Systems	26	Robotics & Automation	33
Interim Classes	43	Security Institute, The	64
Key to Course Numbers/Prefixes	2	Smart Home Technology	20
Le Mars Day & Evening Classes	52, 53	Sociology	33
Literature	26, 41	Speech	34, 42
Maintenance Technician	42	Student Development	34, 42
Management	27	Supplemental Instruction	43
Mandatory Reporter	23	Truck Driver Training	15
Manufacturing	41	Video Game Design	34
Mapleton (Electrician)	19, 39	Welding	35, 42
Marketing	27	Wind Energy Technician	36
Mass Media Studies	27		

Don't waste your time . . .



**order
books
online**

**[http://bookstore.
witcc.edu](http://bookstore.witcc.edu)**



Western Iowa Tech
Community College
4647 Stone Avenue,
P.O. Box 5199
Sioux City, IA 51102-1997