

# Electrician

## Electrician

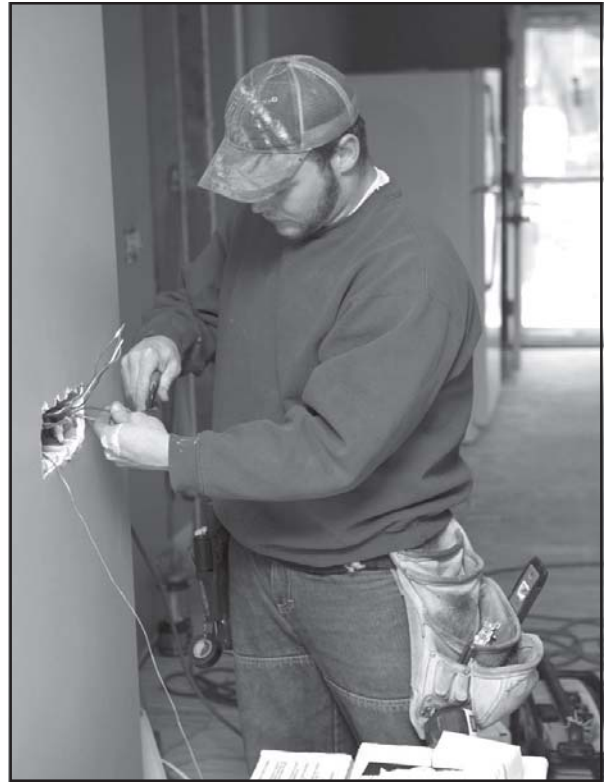
Diploma  
Mapleton

### Program Overview and Opportunities:

The Electrical program offers an industry recognized curriculum providing the basic knowledge and skills in applied electrical theory; residential, commercial, and industrial wiring; blueprint reading; estimating; and building codes. Proper safety practices in the use of test equipment and hand and power tools are also stressed. Students gain valuable on-site electrical experience through wiring the Western Iowa Tech Project House. On-site training and lab instruction are designed to build student confidence and skills which better prepare the graduates to enter into the workforce.

Electricians may choose to work in electrical construction or industrial electrical maintenance. Positions are also available with electric utility companies and in electrical material sales. Graduates may use the program as a "stepping stone" into apprenticeship training.

According to the Bureau of Labor Statistics, employment of electricians is expected to grow as fast as the average for all occupations through the year 2014. Electrical workers are among the highest paid workers in the skilled construction trades. As the population and economy grow, more electricians will be needed to install and maintain electrical devices and wiring in homes, factories, offices, and other structures. An increase in power plant construction over the next ten years will require many additional electricians. (Occupational Outlook Handbook. Bureau of Labor Statistics 2006-2007.)



### Electrician Curriculum

Course #	Title	Credits
<b>ELE 112</b>	Basic Electrical Theory .....	3
<b>ELE 132</b>	Introduction to Wiring .....	3
<b>HCR 715</b>	Blueprint Reading .....	1
<b>ELE 135</b>	Installation of Wiring Systems .....	4
<b>MAT 772</b>	Applied Math* OR	
<b>MAT</b>	Math Elective .....	3
<b>ELE 192</b>	Principles of Motors/Transformers .....	3
<b>ELE 157</b>	Advanced Commercial Wiring .....	4
<b>ELE 195</b>	Motor Control .....	3
<b>ELE 184</b>	Field Installed Commercial Systems .....	3
<b>CSC 110</b>	Introduction to Computers (3) OR	
<b>BCA 191</b>	Computer Applications (2) .....	2 or 3
<b>ELE 185</b>	Field Installed Advanced Commercial Systems .....	4
<b>ELE 197</b>	Advanced Motor Control .....	3
<b>COM 723</b>	Workplace Communications* OR	
<b>ENG/LIT/COM</b>	English Elective .....	3
<b>Program Total .....</b>		<b>39 or 40</b>

\* Denotes courses commonly articulated with area high schools.

See course descriptions in the back of the catalog for more detailed information about course prerequisites and co-requisites.

The courses listed above are grouped in the order that they should be taken each semester. Please see an Electrician program advisor to ensure correct course sequence.

### Are You a Part-time Student?

See a program advisor for a list of available courses for part-time students and to develop an individualized plan of study.

### Program Advisors

George Koettters  
712-882-2401 koetteg@witcc.edu  
WITCC Center, Highway 75N, Mapleton, Iowa

Greg Strong, BS, BA, Division Chair  
Ext. 1480 Room A111 strongg@witcc.edu